



Ferme Park Road, N8

£1,850,000

Dexters



Ferme Park Road, N8

An exceptional six-bedroom Victorian semi-detached house, arranged over three floors and extending to more than 2,330 sq. Ft. The property features a large garden and a private roof terrace.

Upon entering the property, you are welcomed by a wide and inviting entrance hall that leads through to a spacious double reception/dining room. At the rear, the modern kitchen features a breakfast bar, integrated appliances, and sliding doors that open directly onto the garden.

The first floor offers four generous double bedrooms, including one with an en suite, alongside a stylish family bathroom. On the second floor, you'll find two further double bedrooms and a contemporary shower room. From the landing, there is access to a superb roof terrace, providing elevated views over the impressive 70 ft garden.

Situated on a highly sought-after residential turning just off Crouch End's vibrant Broadway, with its array of boutiques, bars, and restaurants only moments away. The property is also conveniently located just 0.5 miles from Rokesly Nursery, Infant, and Junior School, which holds a 'Good' Ofsted rating.

Features

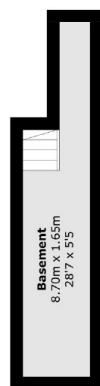
- Freehold House
- Turn Key
- Roof Terrace
- Six Bedrooms
- 70ft Garden
- Semi-Detached



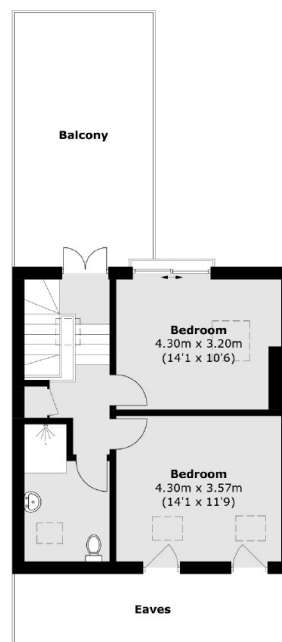




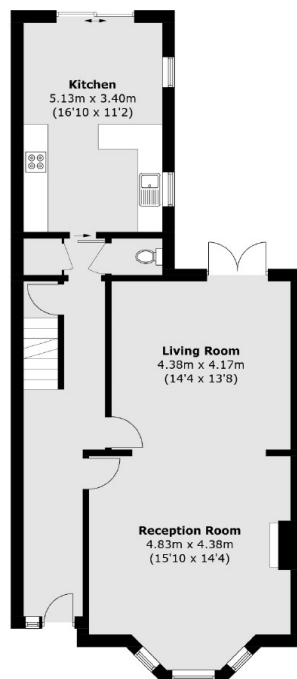
Ferme Park Road, London, N8



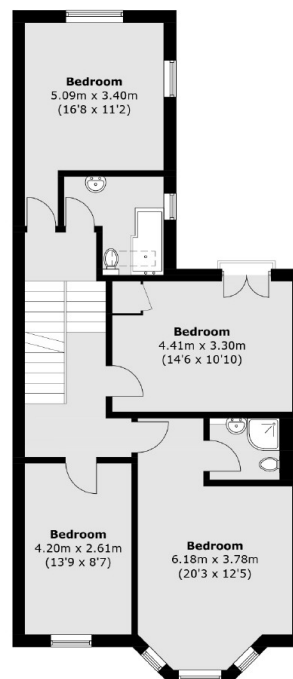
Basement



Second Floor



Ground Floor



First Floor

Total area (approx.): 216.5 sq. m (2,330.4 sq. ft)
(Excluding Eaves)

Balcony: 21.0 sq. m (226.0 sq. ft)