



Hornsey Rise, N19

£675,000

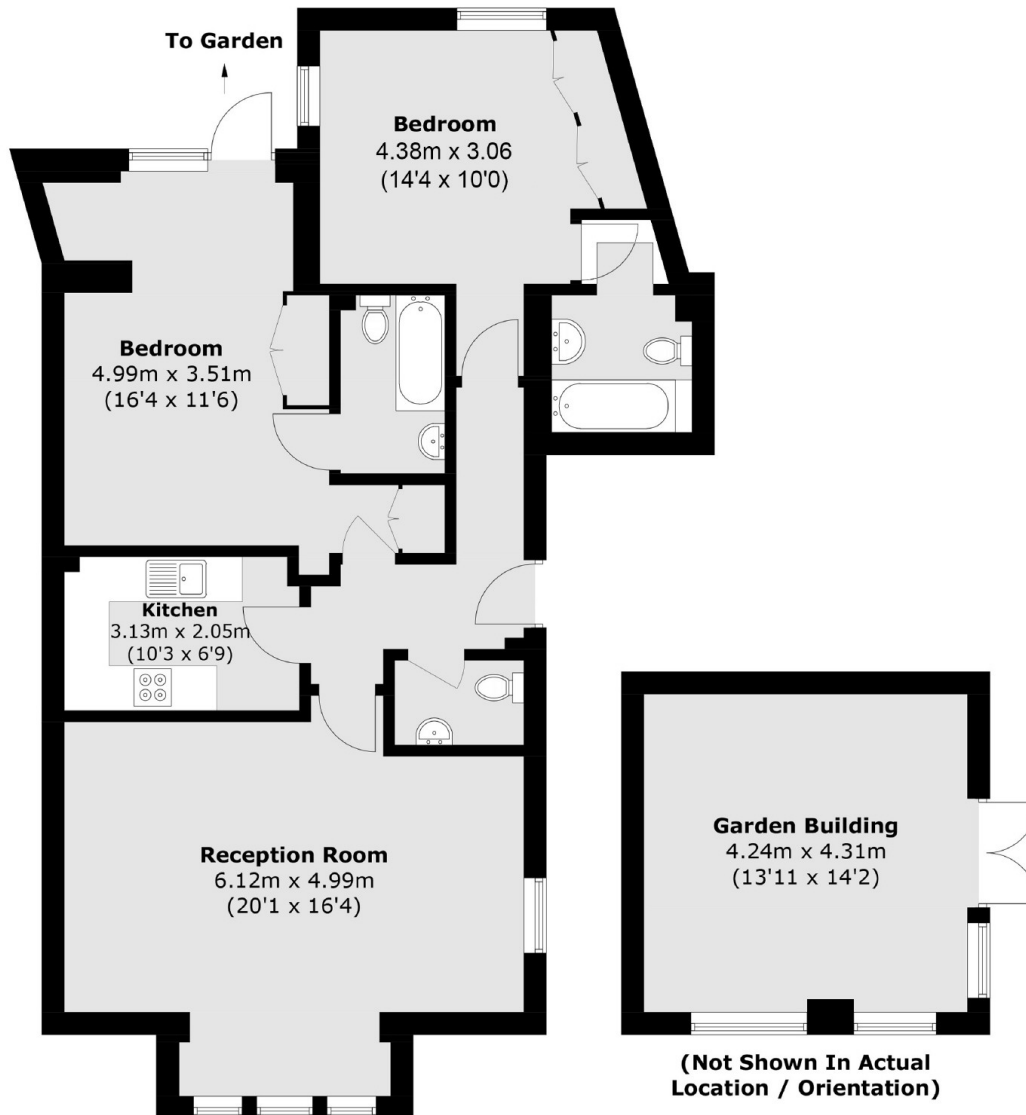
Set in an impressive Victorian conversion on the raised ground floor, this property has a large reception room, two en suite double bedrooms, and a large private garden with a separate outbuilding and a private driveway.

Hornsey Rise is known for its excellent location, providing easy access to local shops, restaurants, schools, parks, and public transportation options, including Crouch Hill station (Suffragette line).

Features

- Off-Street Parking
- Private Garden
- Raised Ground Floor
- Two Bedrooms
- Two Bathrooms
- Period Conversion

Hornsey Rise, London, N19



Total area (approx.): 86.5 sq. m (931.1 sq. ft)
Garden Building: 18.5 sq. m (199.1 sq. ft)