



Ferme Park Road, N4

£675,000

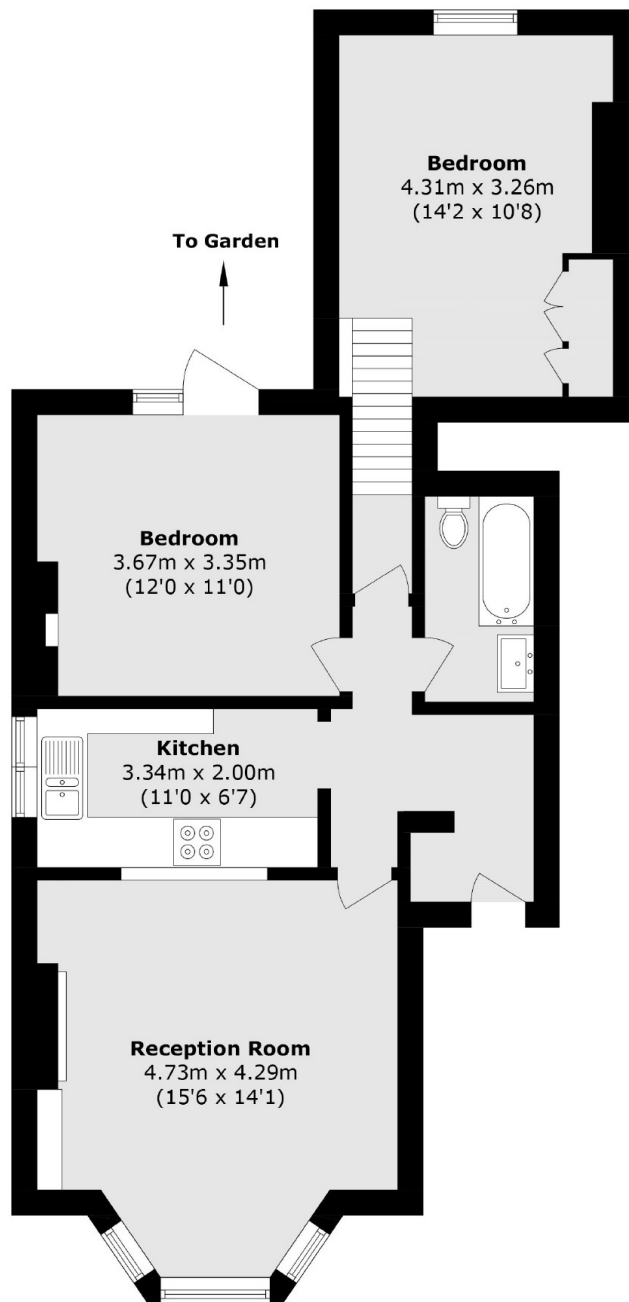
A beautifully presented, split level two bedroom apartment in a period conversion. This property has high ceilings, original features and lots of light throughout with direct access to it's own section of a shared garden.

Ferme Park Road sits on the borders of Crouch End with easy access to the array of shops on the Broadway. The popular Stroud Green Road is also within easy walking distance.

Features

- Period Conversion
- Two Double Bedrooms
- Split-Level
- Access to Garden
- Separate Kitchen
- Chain Free

Ferme Park Road, London, N4



Total area (approx.): 63.9 sq. m (687.8 sq. ft)

Dexters

Finsbury Park
87 Stroud Green Road
Finsbury Park
London
Sales
020 7483 6360

Energy Rating: TBC. We aim to make our particulars both accurate and reliable. However they are not guaranteed; nor do they form part of an offer or contract. If you require clarification on any points then please contact us, especially if you're traveling some distance to view. Please note that appliances and heating systems have not been tested and therefore no warranties can be given as to their good working order.

 **RICS** | Regulated
Estate Agent
and Letting Agent

[dexters.co.uk](https://www.dexters.co.uk)