



Mount Pleasant Villas, N4

£450,000

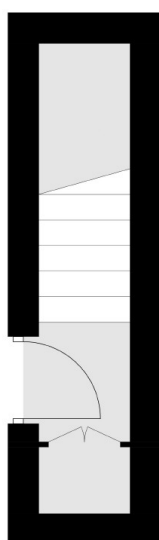
A well-presented one double bedroom apartment set on the second floor of this Victorian house. The property features an open plan kitchen and living area, ample storage space and high ceilings throughout.

Mount Pleasant Villas is a lovely location, just minutes away from Finsbury Park, Haringay Green Lanes, and Crouch Hill, with a great selection of bars, shops, cafés, and restaurants that Stroud Green has to offer.

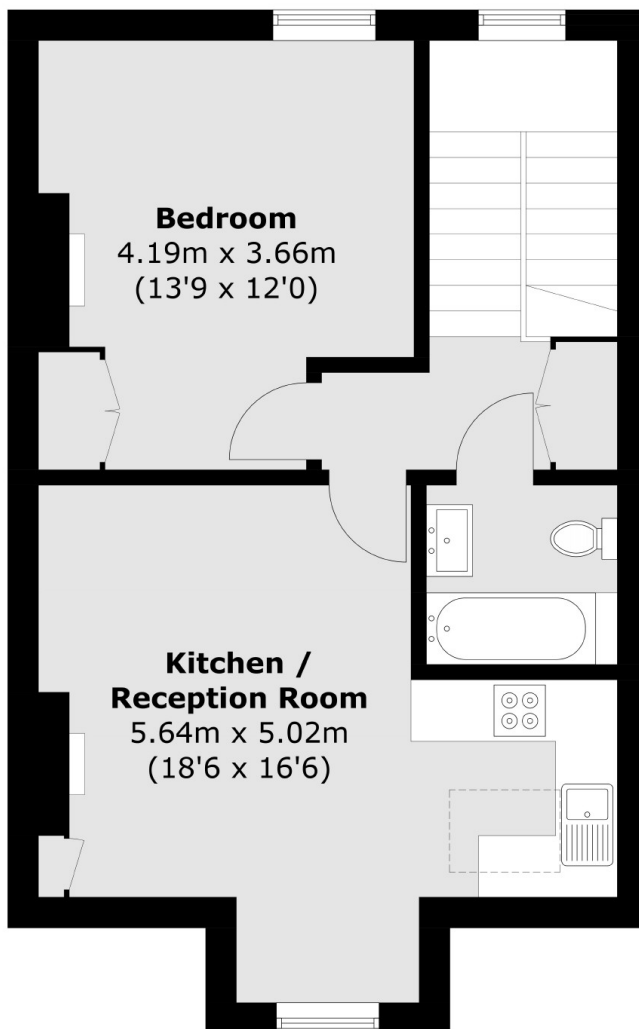
Features

- One Double Bedroom
- Top Floor Flat
- Share of Freehold
- Family Bath
- Quiet Road
- Excellent Location

Mount Pleasant Villas, London, N4



First Floor



Second Floor

Total area (approx.): 53.1 sq. m (571.5 sq. ft)