



Tollington Park, N4

£761 Per week

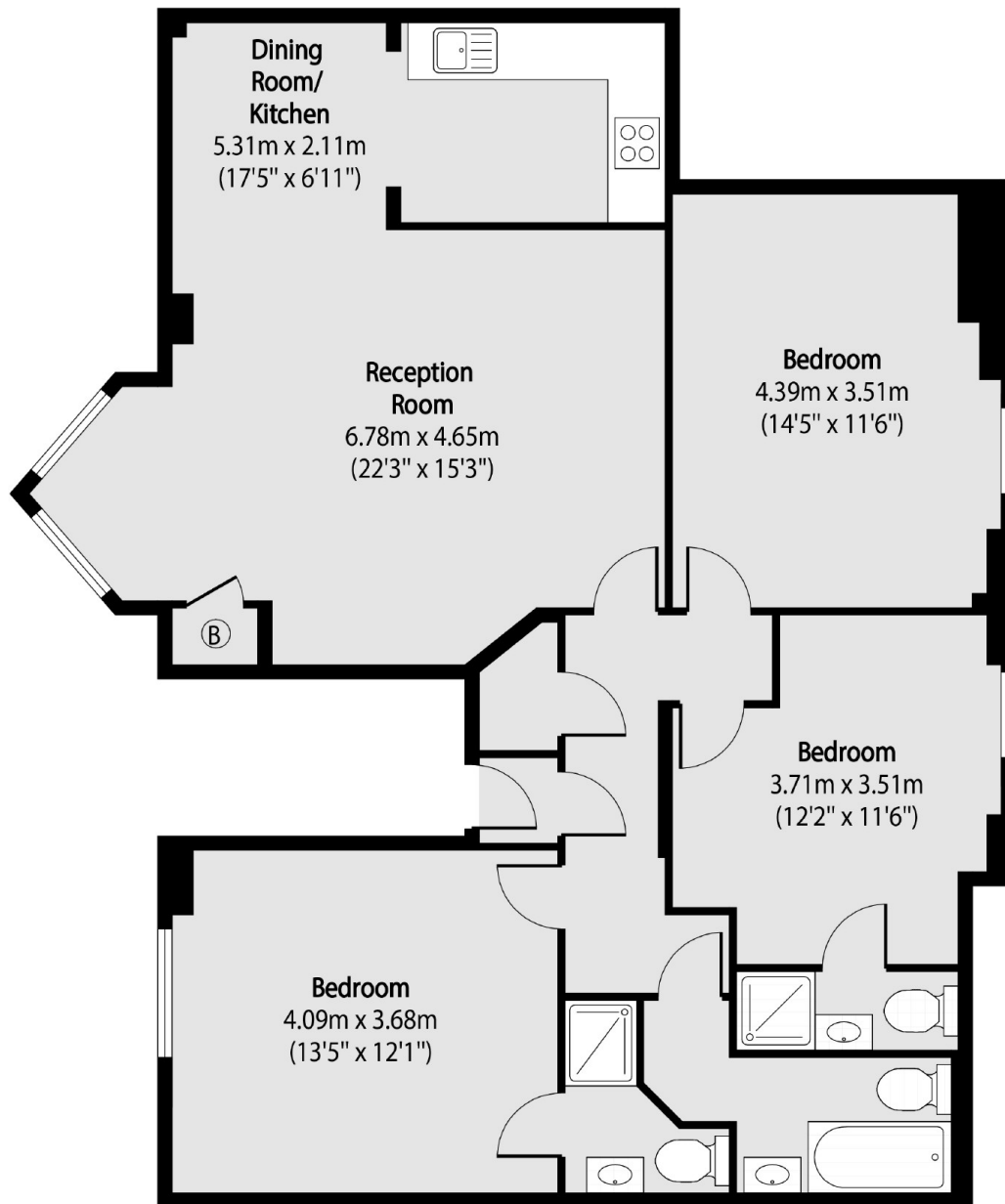
A three double bedroom property located on Tollington Park. This property has wooden floors through out, a semi open plan living space, three bathrooms and is finished to a high standard.

Located on Tollington Park and within easy reach of the local shops and cafes on both Stroud Green and Hornsey Road. Finsbury Park underground station is a short distance away for access to Victoria, Piccadilly and mainline services.

Features

- Three Double Bedrooms
- Modern Finish
- Three Baths
- Semi Open Plan
- Convenient Location
- Furnished

Tollington Park, London, N4



Total area (approx): 97.08 sq m (1045 sq. ft)

Dexters

Finsbury Park
87 Stroud Green Road
Finsbury Park
London
Lettings
020 7483 6361

Energy Rating: . We aim to make our particulars both accurate and reliable. However they are not guaranteed; nor do they form part of an offer or contract. If you require clarification on any points then please contact us, especially if you're traveling some distance to view. Please note that appliances and heating systems have not been tested and therefore no warranties can be given as to their good working order.

 **RICS** | Regulated
Estate Agent
and Letting Agent

[dexters.co.uk](https://www.dexters.co.uk)