



Ferme Park Road, N4

£590,000

A split level, two bed apartment in a period conversion on Ferme Park Road. This property has two double bedrooms, a living area and separate kitchen. The flat also has access to a shared garden.

Ferme Park Road sits on the borders of Crouch End with easy access to the array of shops on the Broadway. The popular Stroud Green Road is also within easy walking distance.

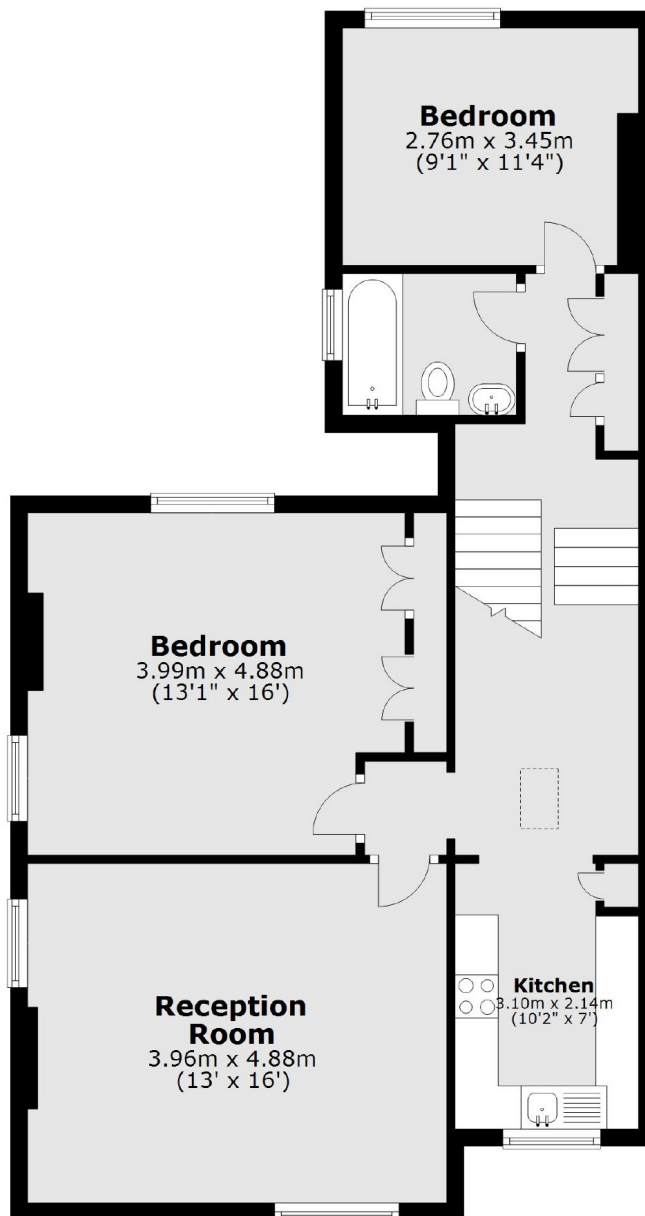
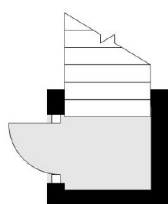
Features

- Period Conversion
- Two Double Bedrooms
- Split Level
- Access to Garden
- Separate Kitchen
- Chain Free

Ferme Park Road, London, N4

Second Floor

First Floor



Total area: approx. 74.4 sq. metres (800.5 sq. feet)

Dexters

Finsbury Park
87 Stroud Green Road
Finsbury Park
London
Sales
020 7483 6360

Energy Rating: D. We aim to make our particulars both accurate and reliable. However they are not guaranteed; nor do they form part of an offer or contract. If you require clarification on any points then please contact us, especially if you're traveling some distance to view. Please note that appliances and heating systems have not been tested and therefore no warranties can be given as to their good working order.

 **RICS** | Regulated
Estate Agent
and Letting Agent

[dexters.co.uk](https://www.dexters.co.uk)