



## Tollington Park, N4

£370,000

A one double bedroom flat, located on the first floor and in good condition throughout. It offers a large reception room with open plan kitchen, a bathroom and access to the amenities of Stroud Green and Finsbury Park.

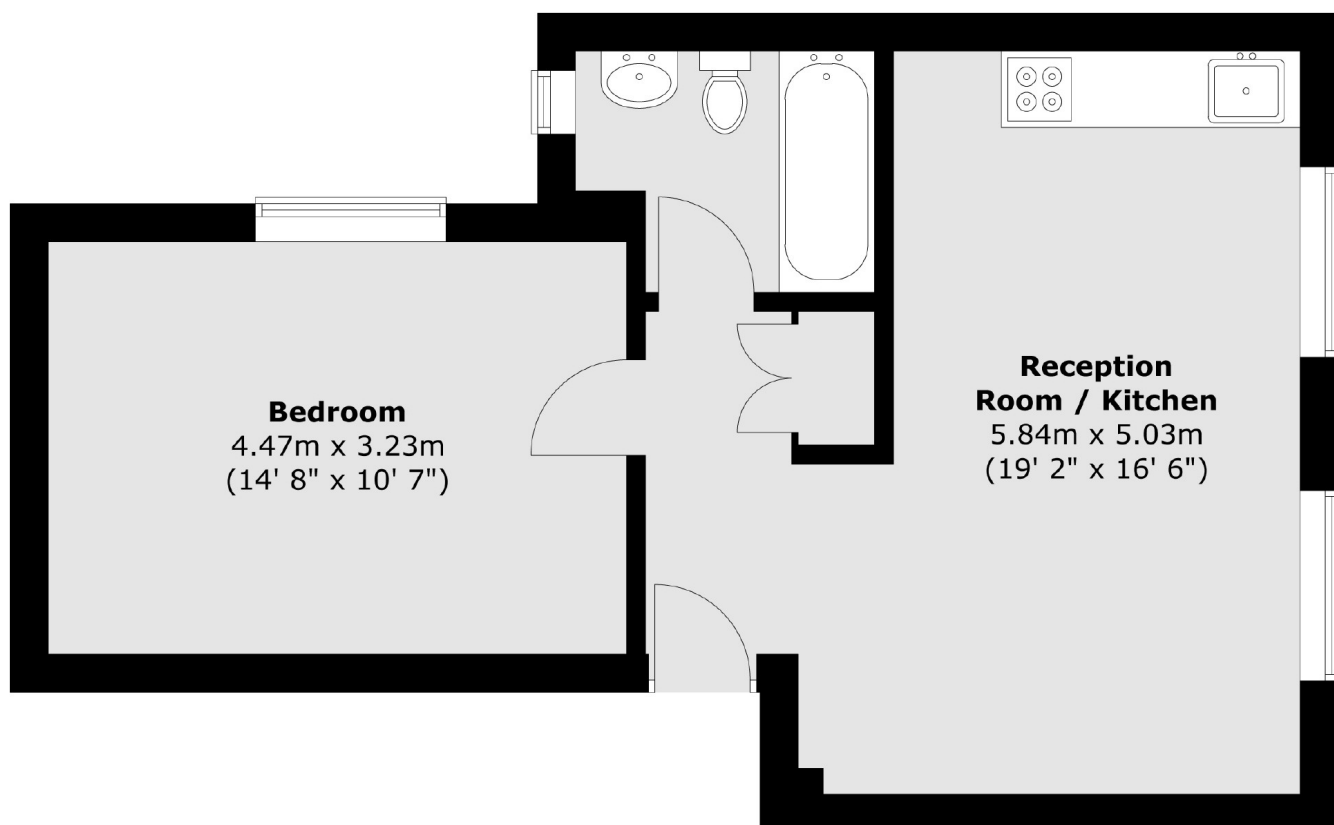
Clyro Court is perfectly located close to Finsbury Park station (Great Northern, Thameslink, Victoria and Piccadilly lines) and the great selection of shops, restaurants and cafés that Finsbury Park has to offer.

### Features

- One Double Bedroom
- First Floor
- Open Plan Living
- Excellent Transport Links
- Communal Garden
- Chain Free

# Tollington Park, London, N4

## First Floor



Total area (approx.) : 45.1 sq. m (485 sq. ft)