



Florence Road, N4

£761 Per week

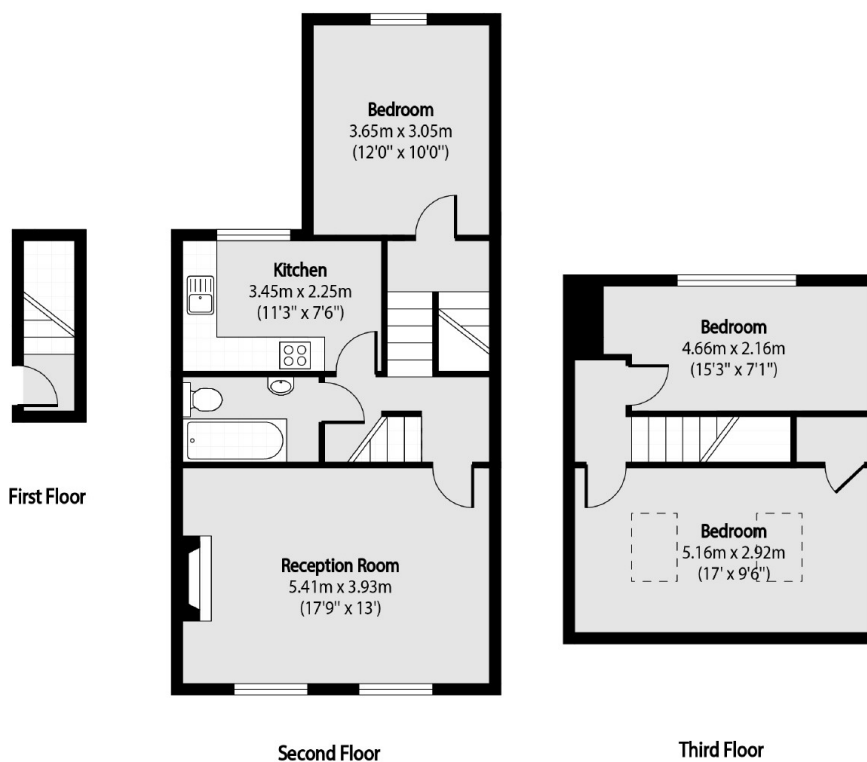
A spacious three double bedroom Victorian mid terrace house, configured over three floors. The property has a spacious reception room, separate eat-in kitchen and is available furnished.

Florence Road is a fantastic location in Stroud Green with brilliant transport links. This property is also located minutes away from the famous Parkland Walk.

Features

- Three Double Bedrooms
- Spacious Reception
- Great Transport Links
- Characterful Building
- Furnished
- Split Level

Florence Road, London, N4



Total area (approx): 87.67 sq m (943 sq. ft)