



Crouch Hill, N4

£775,000

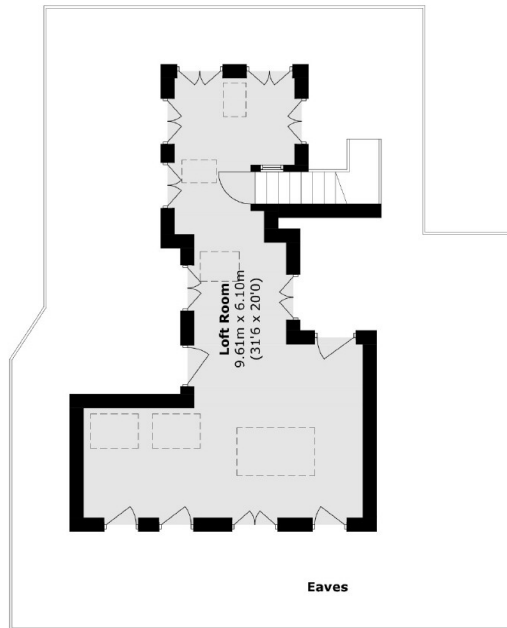
A spacious three bedroom apartment located on the top floor of a Victorian mansion block. This property has an open plan kitchen/reception room, exceptional storage space and stunning views across the city.

Perfectly positioned on the borders of Crouch End, providing easy access to nearby transport links from Finsbury Park and the amenities of Crouch End, Crouch Hill, Stroud Green, Finsbury Park and Archway.

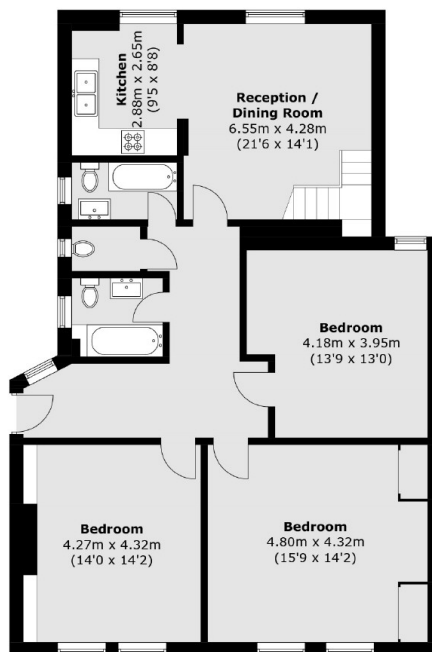
Features

- Three Bedrooms
- Two Family Bathrooms
- Share Of Freehold
- Ample Storage
- Third Floor Flat
- Great Transport Links

Crouch Hill, London, N4



First Floor



Ground Floor

Total area (approx.): 140.5 sq. m (1,513.4 sq. ft)
(Excluding Eaves)

Dexters

Finsbury Park
87 Stroud Green Road
Finsbury Park
London

Sales
020 7483 6360

Energy Rating: D. We aim to make our particulars both accurate and reliable. However they are not guaranteed; nor do they form part of an offer or contract. If you require clarification on any points then please contact us, especially if you're traveling some distance to view. Please note that appliances and heating systems have not been tested and therefore no warranties can be given as to their good working order.

 **RICS** | Regulated
Estate Agent
and Letting Agent

[dexters.co.uk](https://www.dexters.co.uk)