



City North Place, N4

£4,250 Per week

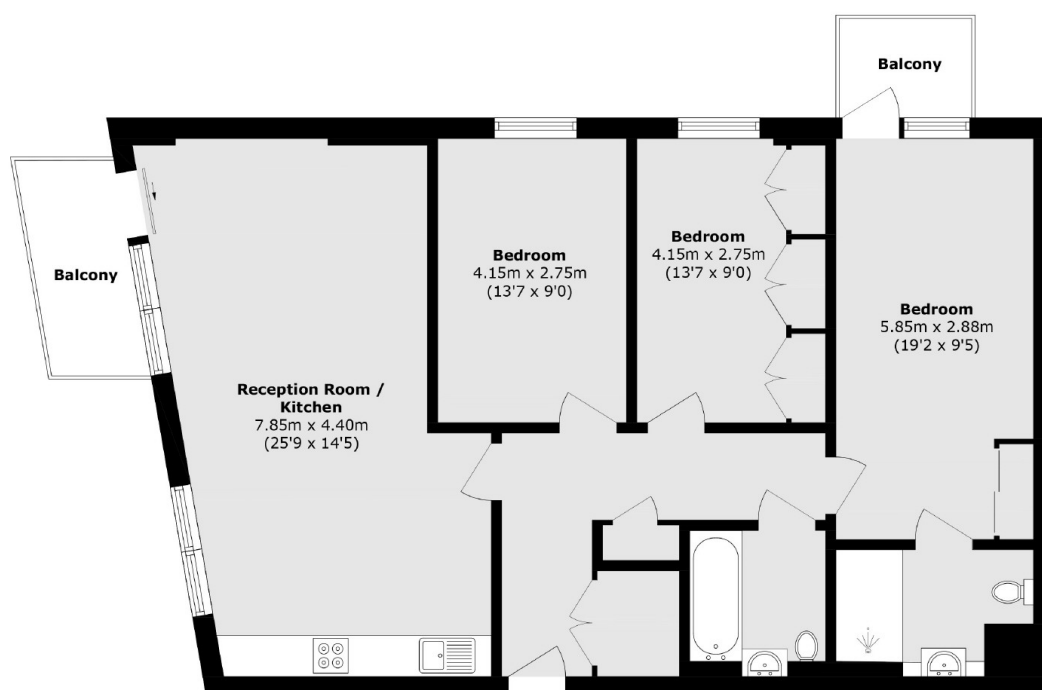
A three double bedroom apartment in the new City North Place Tower development with fantastic city views. It has three bathrooms, an open-plan kitchen/reception, and a private balcony and is finished to a high standard throughout.

City North Place is ideally placed next to Finsbury Park and is moments from the underground station as well as a wide variety of independent shops, cafés and restaurants.

Features

- 24 Hour Concierge
- Amazing Location
- Paramount Views
- Private Balcony
- Open Plan
- Great Transport Links

City North Place, London, N4



Total area (approx.): 97.9 sq. m (1053.7 sq. ft)

Balcony area (approx.): 7.9 sq. m (85 sq. ft)

Dexters

Finsbury Park
87 Stroud Green Road
Finsbury Park
London
Lettings
020 7483 6361

Energy Rating: B. We aim to make our particulars both accurate and reliable. However they are not guaranteed; nor do they form part of an offer or contract. If you require clarification on any points then please contact us, especially if you're traveling some distance to view. Please note that appliances and heating systems have not been tested and therefore no warranties can be given as to their good working order.

 **RICS** | Regulated
Estate Agent
and Letting Agent

[dexters.co.uk](https://www.dexters.co.uk)