



Ossian Road, N4

£1,300,000

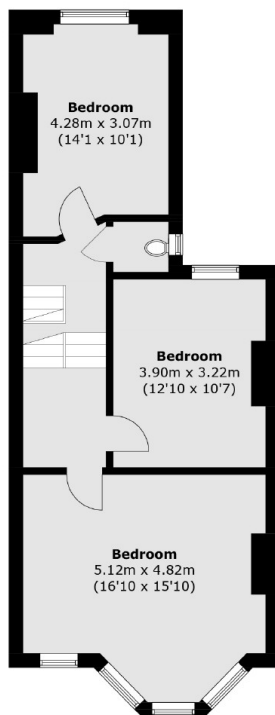
On the market for the first time in 60 years, this six-bedroom Victorian terraced house spans over 2,100 sq.ft across four floors. Offering tremendous potential, the property is being sold chain-free and includes a south-facing garden.

Located close to the green spaces of Stroud Green, Crouch Hill and Finsbury Park. Ferme Park Road is ideally located for access to the City and to more local shops, café's and bars.

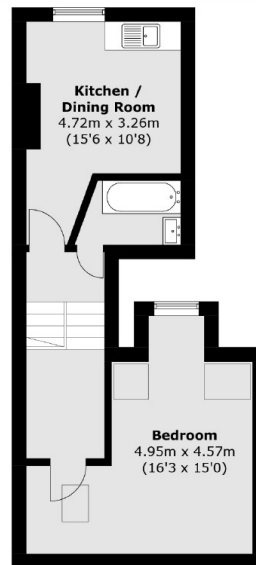
Features

- Freehold
- Six Bedroom
- Bathrooms
- Garden
- Chain Free
- Excellent Location

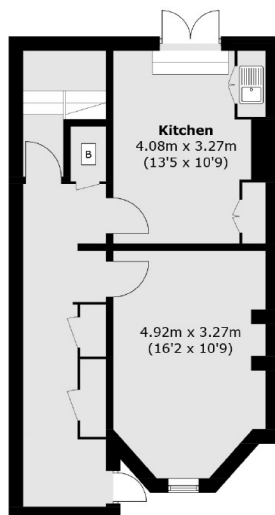
Ossian Road, London, N4



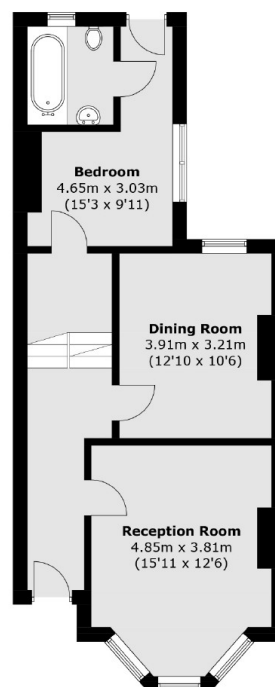
First Floor



Second Floor



Lower Ground Floor



Ground Floor

Total area (approx.): 202.3 sq. m (2,177.6 sq. ft)