



## Coster Avenue, N4

£519 Per week

A well presented double bedroom apartment in the Woodberry Down development. This property has an open plan living area which leads out to a private balcony. The apartment also has access to a concierge, gym and pool within the development.

Hartingtons Court forms part of the sought -after, luxury Woodberry Down Development offering easy access to the Piccadilly Line via Manor House Station and Finsbury Park Station. A vast array of shops, cafés and restaurants are located along nearby and as well as the green open spaces of both Clissold Park and Finsbury Park.

### Features

- Luxury Development
- One Bed
- Contemporary Finish
- Private Balcony
- Excellent Transport
- Lift

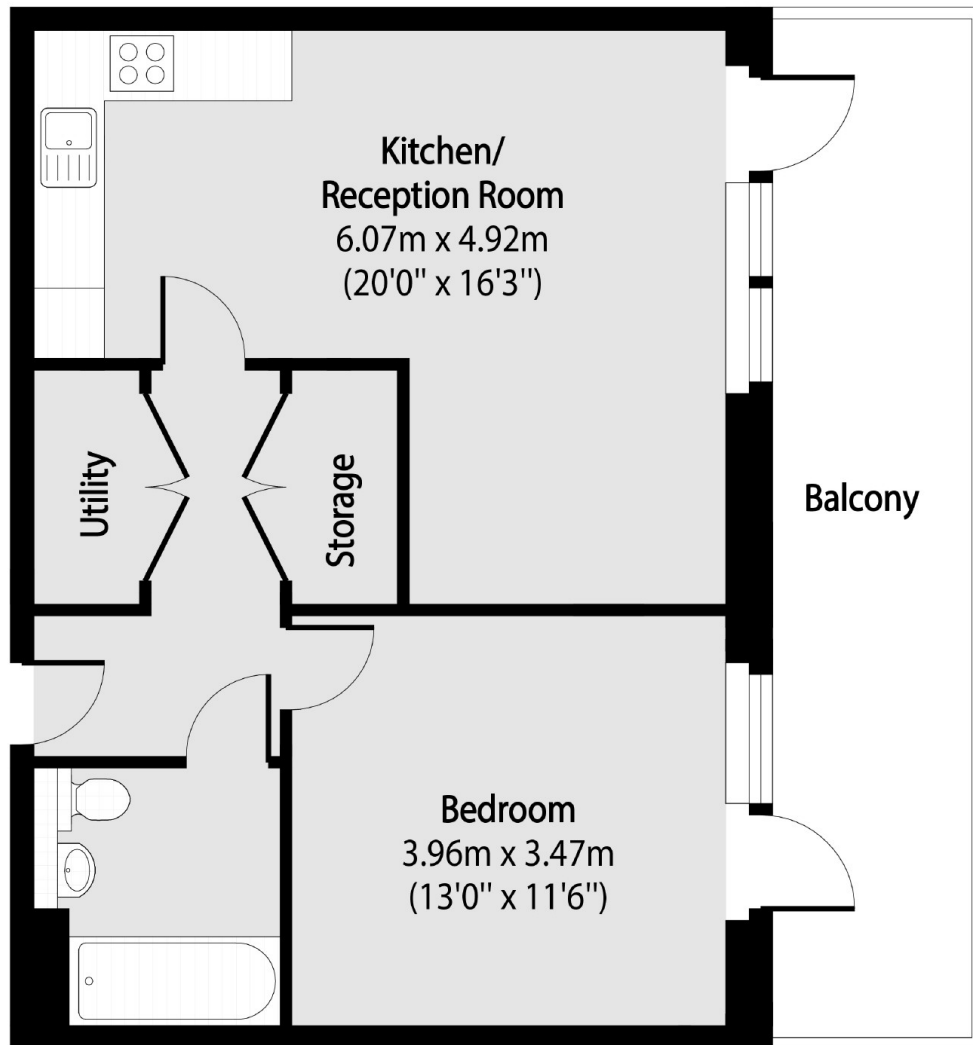


Coster Avenue, N4





Coster Avenue,  
London, N4



Total area (approx): 51.31 sq m (552 sq. ft)

Balcony total area (approx): 14.79 sq m (159 sq. ft)

**Dexters**

Finsbury Park  
87 Stroud Green Road  
Finsbury Park  
London  
Lettings  
020 7483 6361

Energy Rating: B. We aim to make our particulars both accurate and reliable. However they are not guaranteed; nor do they form part of an offer or contract. If you require clarification on any points then please contact us, especially if you're traveling some distance to view. Please note that appliances and heating systems have not been tested and therefore no warranties can be given as to their good working order.

 **RICS** | Regulated  
Estate Agent  
and Letting Agent

[dexters.co.uk](http://dexters.co.uk)