



Goodwin Street, N4

£825,000

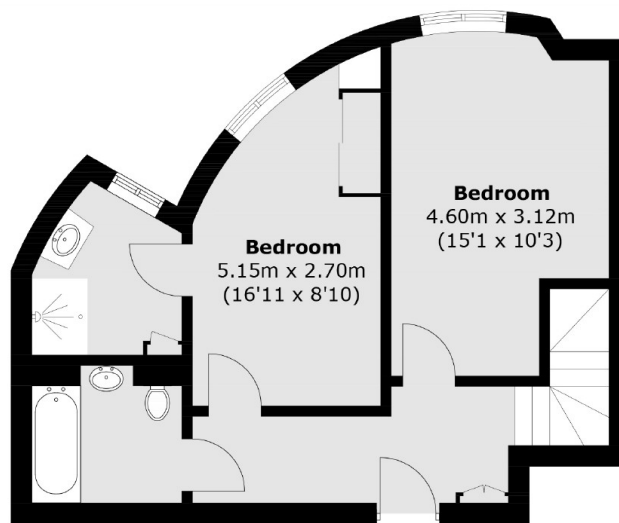
This split-level two bedroom apartment is set on the eleventh floor of this modern block. This property benefits from a large private balcony, a separate kitchen and a stunning communal roof terrace.

City North Place is ideally placed next to Finsbury Park and is moments from the underground station (Victoria and Piccadilly lines) as well as a wide variety of independent shops, cafés and restaurants.

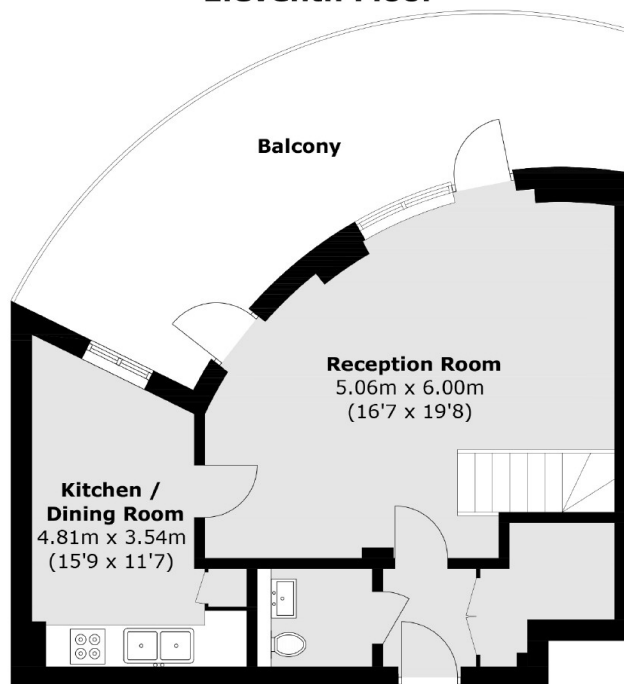
Features

- Two Double Bedrooms
- Split Level
- Private Balcony
- Communal Roof Terrace
- 24 Hour Concierge
- Excellent Transport Links

Goodwin Street, London, N4



Eleventh Floor



Tenth Floor

Total area (approx.): 90.8 sq. m (977.4 sq. ft)
Balcony : 22.7 s. m (244.3 sq. ft)