



## Heysham Road, N15

### £550,000

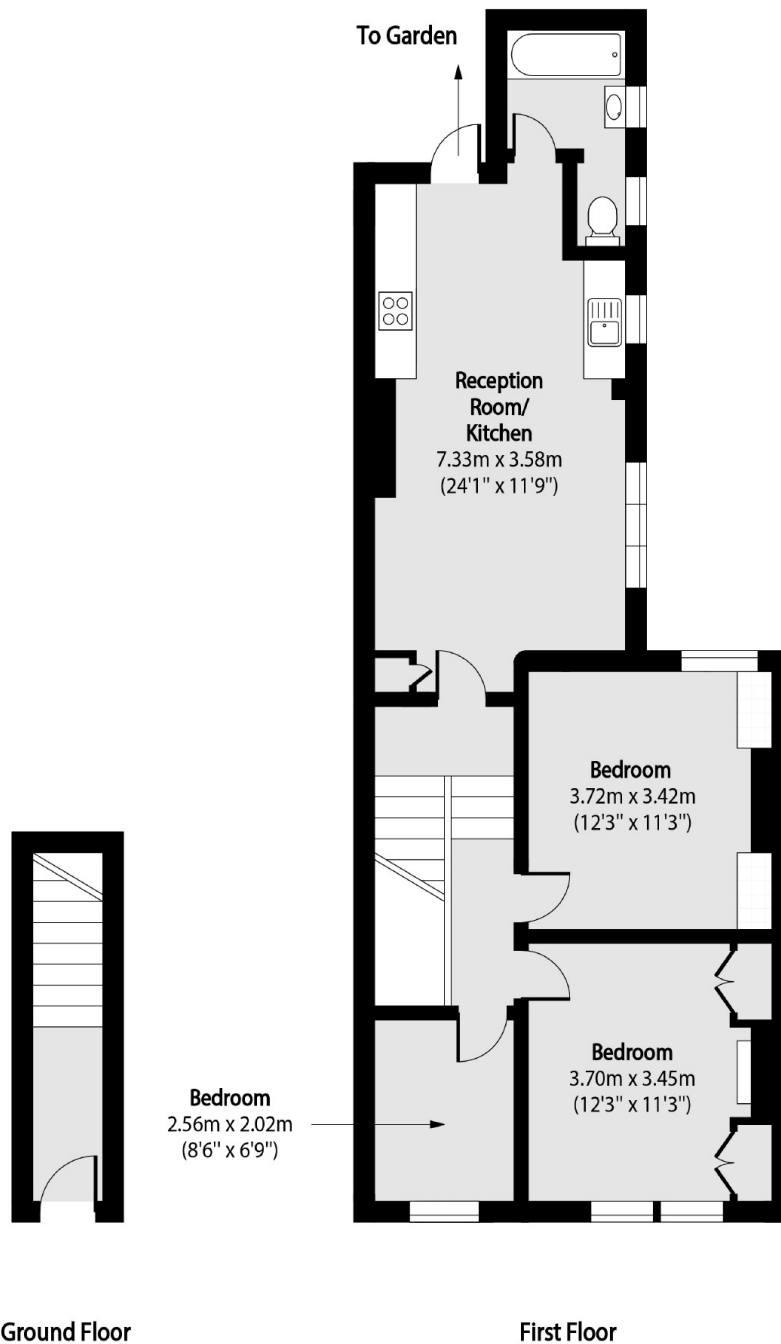
A spacious two bedroom, first floor flat is spread over 830 sq.ft and offers bright and airy interiors throughout. The property has an open plan kitchen/ living room, ample storage and a private garden.

Located within walking distance to the amenities of Green Lanes and Seven Sisters underground station. It is also close to the popular open green spaces of Downhills Park and Woodberry Down Park.

### Features

- Wooden Floors
- Chain Free
- Period Features
- Great Transport Links
- Private Entrance
- Private Garden

# Heysham Road, London, N15



Total area (approx): 77.04 sq m (829 sq. ft)

## Dexters

Finsbury Park  
87 Stroud Green Road  
Finsbury Park  
London  
Sales  
020 7483 6360

Energy Rating: C. We aim to make our particulars both accurate and reliable. However they are not guaranteed; nor do they form part of an offer or contract. If you require clarification on any points then please contact us, especially if you're traveling some distance to view. Please note that appliances and heating systems have not been tested and therefore no warranties can be given as to their good working order.

 **RICS** | Regulated  
Estate Agent  
and Letting Agent

dexters.co.uk