

## Tiltman Place, N7

**£576** Per week

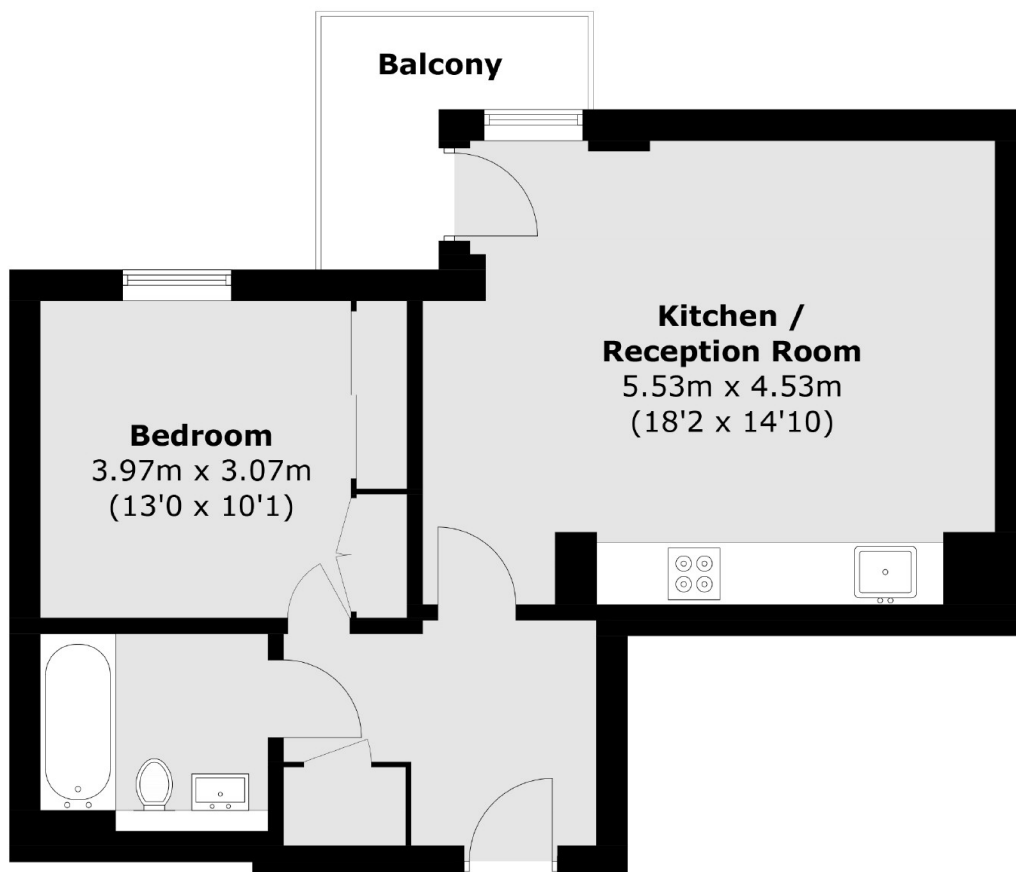
SHORT LET. A bright and spacious one bedroom property in a private development. This apartment has an open plan living area with a private balcony and a big double bedroom.

Tiltman Place is ideally located for the many amenities of Holloway Road in addition to a variety of local transport links.

### Features

- Short Let
- Available Immediately
- All Bills Included
- Private Balcony
- 24 Hour Concierge
- One Bedroom

# Tiltman Place, London, N7



Total area (approx.): 47.4 sq. m (510.2 sq. ft)  
Balcony : 4.1 sq. m (44.1 sq. ft)

## Dexters

Finsbury Park  
87 Stroud Green Road  
Finsbury Park  
London  
Lettings  
020 7483 6361

Energy Rating: C. We aim to make our particulars both accurate and reliable. However they are not guaranteed; nor do they form part of an offer or contract. If you require clarification on any points then please contact us, especially if you're traveling some distance to view. Please note that appliances and heating systems have not been tested and therefore no warranties can be given as to their good working order.

 **RICS** | Regulated  
Estate Agent  
and Letting Agent

dexters.co.uk