



Turnpike Lane, N8

£350,000

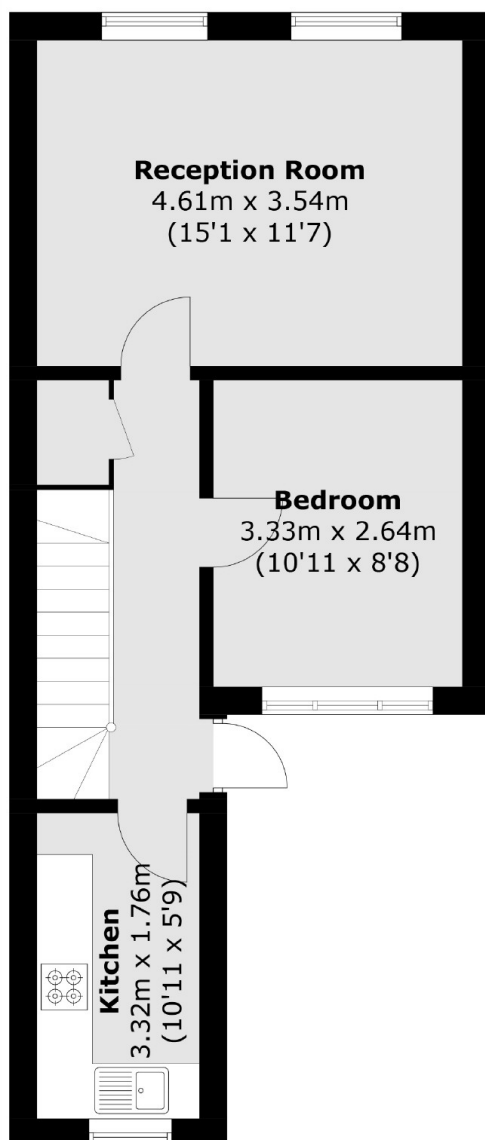
This three bedroom split-level flat, situated in a desirable location, boasts a spacious reception room and a separate kitchen, making it an excellent home for families or investors alike.

Located on Turnpike Lane amidst the vibrant amenities of Green Lanes, Westover Court is just 0.1 miles from the underground station, offering easy access to excellent transport links.

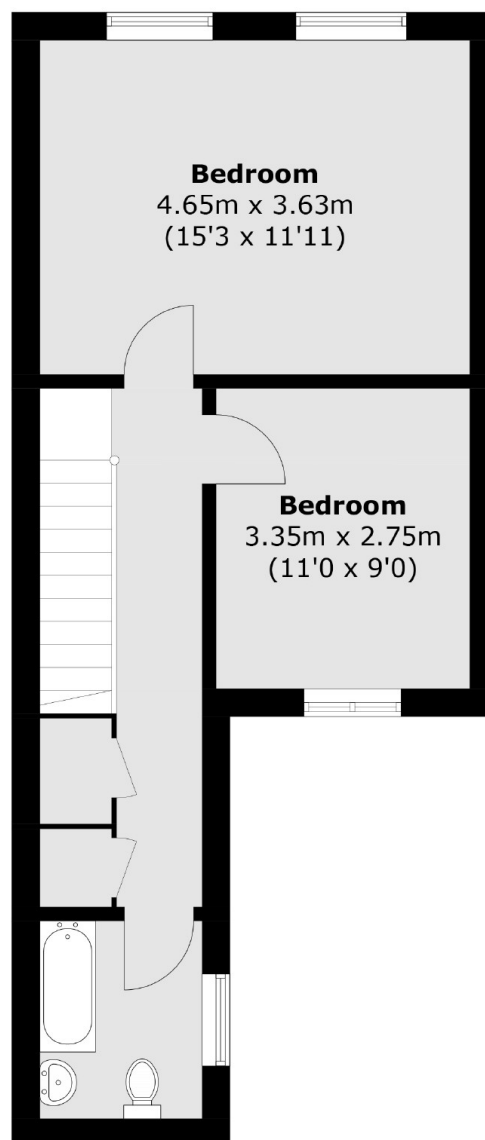
Features

- Three Bedrooms
- Split-Level
- Spacious Living Area
- Communal Entrance
- Close to Local Amenities
- Excellent Transport Links

Turnpike Lane, London, N8



First Floor



Second Floor

Total area (approx.): 81.7 sq. m (879.3 sq. ft)