



Upper Tollington Park, N4

£600,000

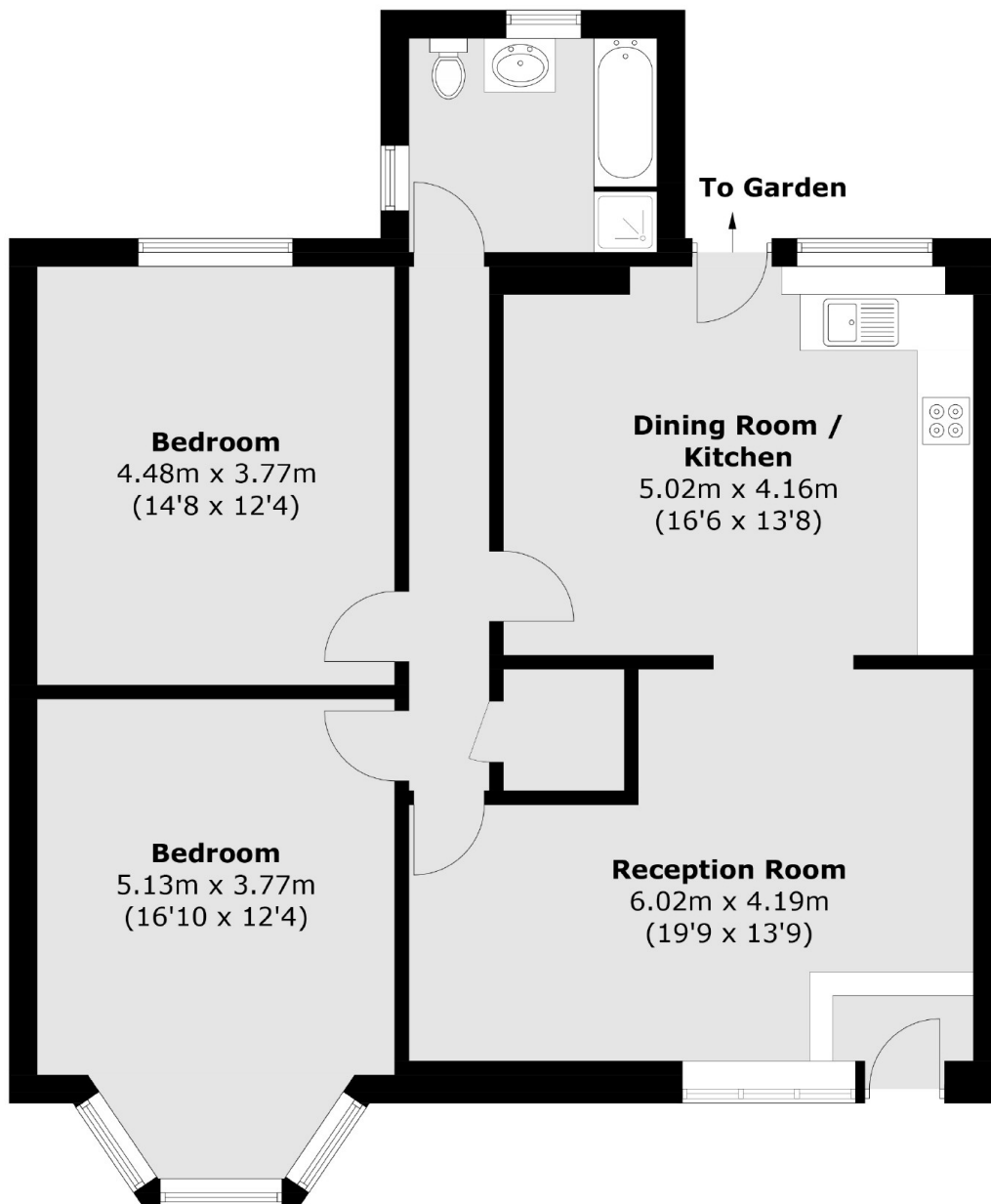
The property has its own private entrance on the lower ground floor, as you enter you have a large open plan kitchen/reception room with direct access to an extensive garden, two double bedrooms and bathroom.

Upper Tollington Park is walking distance of Finsbury Park and Grade II listed nature reserve Parkland Walk. Close to local eateries and amenities in Stroud Green and great transport links from Finsbury Park Station.

Features

- Private Garden
- Share Of Freehold
- Chain Free
- Two Double Bedrooms
- Circa 1000sqft
- Great Transport Links

Upper Tollington Park, London, N4



Total area (approx.): 94.7 sq. m (1019 sq. ft)