



## Katherine Close, N4

### £650,000

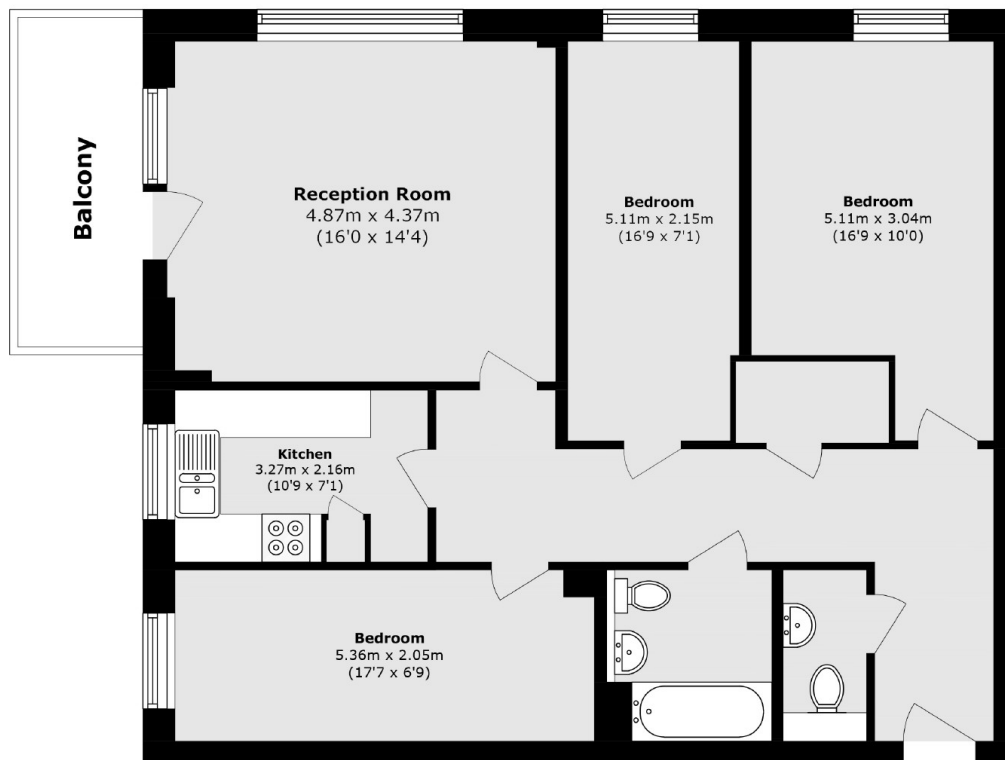
A well presented three bedroom apartment set within this modern block. The property features a bright reception room with direct access to a private balcony, a separate kitchen and underground parking.

Ashview apartments forms part of the sought-after, luxury Woodberry Down Development offering easy access to the Piccadilly Line via Manor House Station and Finsbury Park Station.

### Features

- Three Double Bedrooms
- Modern Development
- Underground Parking
- Private Balcony
- Separate Kitchen
- Long Lease

# Katherine Close, London, N4



Total area (approx.): 91.9 sq. m (989.2 sq. ft)

Balcony area (approx.): 6.4 sq. m (68.8 sq. ft)