



Heathville Road, N19

£675,000

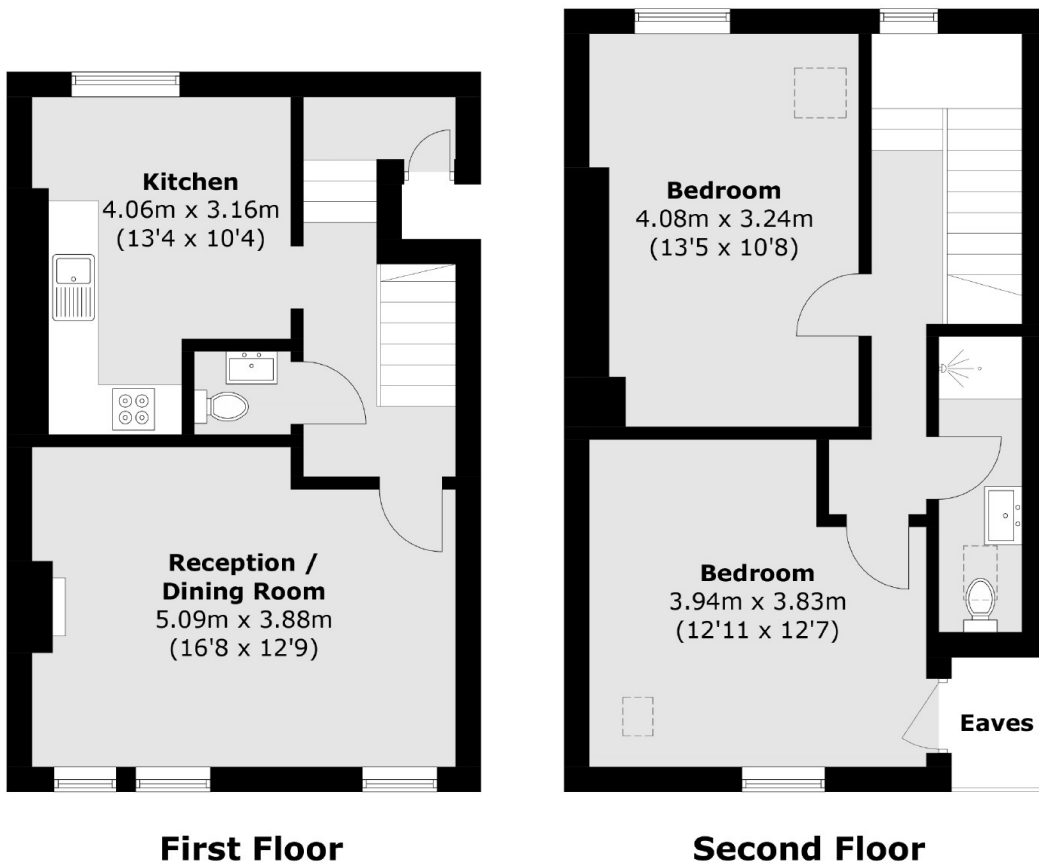
An exceptionally well presented bright two bedroom property split over the upper floors of this period conversion. The flat offers high ceilings, sash windows and wooden flooring.

Heathville Road is a sought-after, quiet residential street on the Crouch End borders, offering easy access to transport links at Finsbury Park and the amenities of Crouch End, Crouch Hill, Stroud Green, and Archway.

Features

- Share of Freehold
- Two Double Bedrooms
- Wooden Floors
- Period Features
- Upper Floors
- Lots of Natural Light

Heathville Road, London, N19



Total area (approx.): 84.0 sq. m (904.2 sq. ft)
(Excluding Eaves)