



Woodberry Grove, N4

£646 Per week

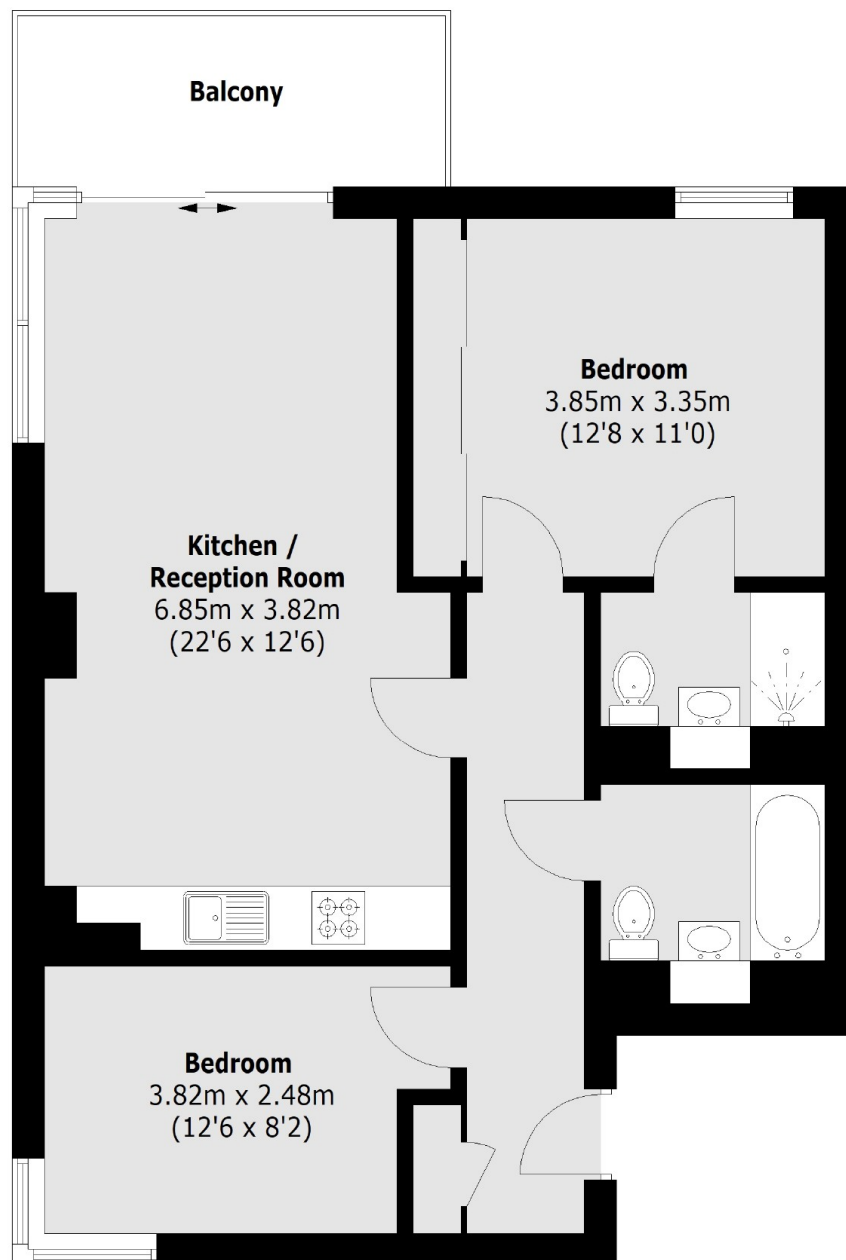
A well presented two bedroom apartment in the Woodberry Down development. This property has an open plan living area which leads out to a private balcony, two double bedrooms and two bathrooms. The development has a concierge and access to a gym.

Woodberry Down is ideally located within easy reach of Manor House station as well as the green open space of Finsbury Park.

Features

- Two Bed
- Two Bath
- Open Plan
- Great Views
- Gym and Concierge
- Great Transport Links

Woodberry Grove, London, N4



Total area (approx.): 65.0 sq. m (699.6 Sq. ft)
Balcony: 6.4 sq. m (68.8 Sq. ft)