



## Mount Pleasant Crescent, N4

### £500,000

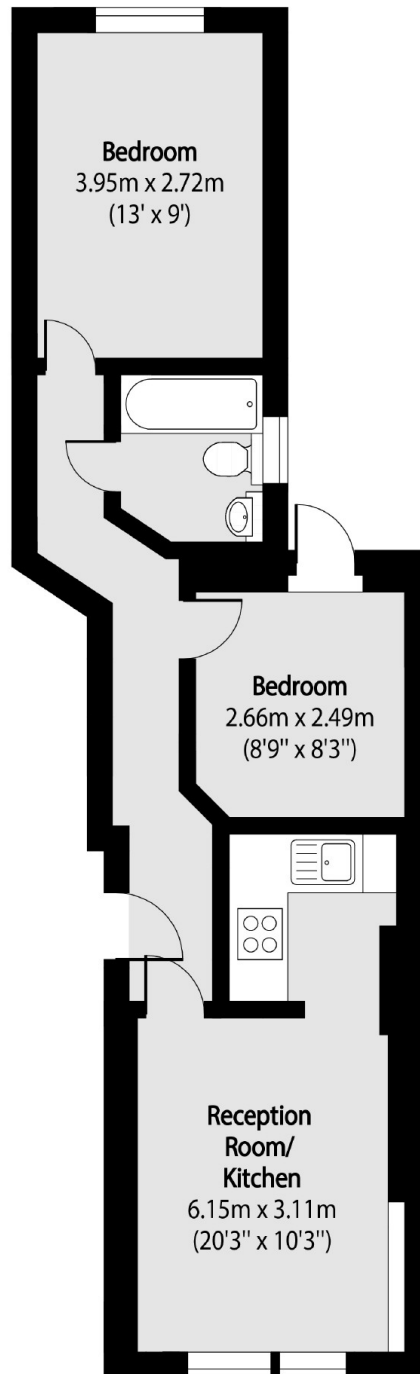
This two bedroom garden flat, located in the heart of Stroud Green, is presented in good decorative order and features an open-plan kitchen reception area and a private rear garden.

Mount Pleasant Crescent is a quiet residential street near Finsbury Park station, offering excellent transport links and easy access to the vibrant shops, bars, pubs, restaurants, and cafés of Finsbury Park and Stroud Green.

### Features

- Two Bedrooms
- Share of Freehold
- Private Garden
- Open Plan Reception
- Excellent Location
- Good Transport Links

# Mount Pleasant Crescent, London, N4



Total area (approx): 47.34 sq m (509 sq. ft)

## Dexters

Finsbury Park  
87 Stroud Green Road  
Finsbury Park  
London  
Sales  
020 7483 6360

Energy Rating: D. We aim to make our particulars both accurate and reliable. However they are not guaranteed; nor do they form part of an offer or contract. If you require clarification on any points then please contact us, especially if you're traveling some distance to view. Please note that appliances and heating systems have not been tested and therefore no warranties can be given as to their good working order.

 **RICS** | Regulated  
Estate Agent  
and Letting Agent

[dexters.co.uk](https://www.dexters.co.uk)