



Hanley Road, N4

£700,000

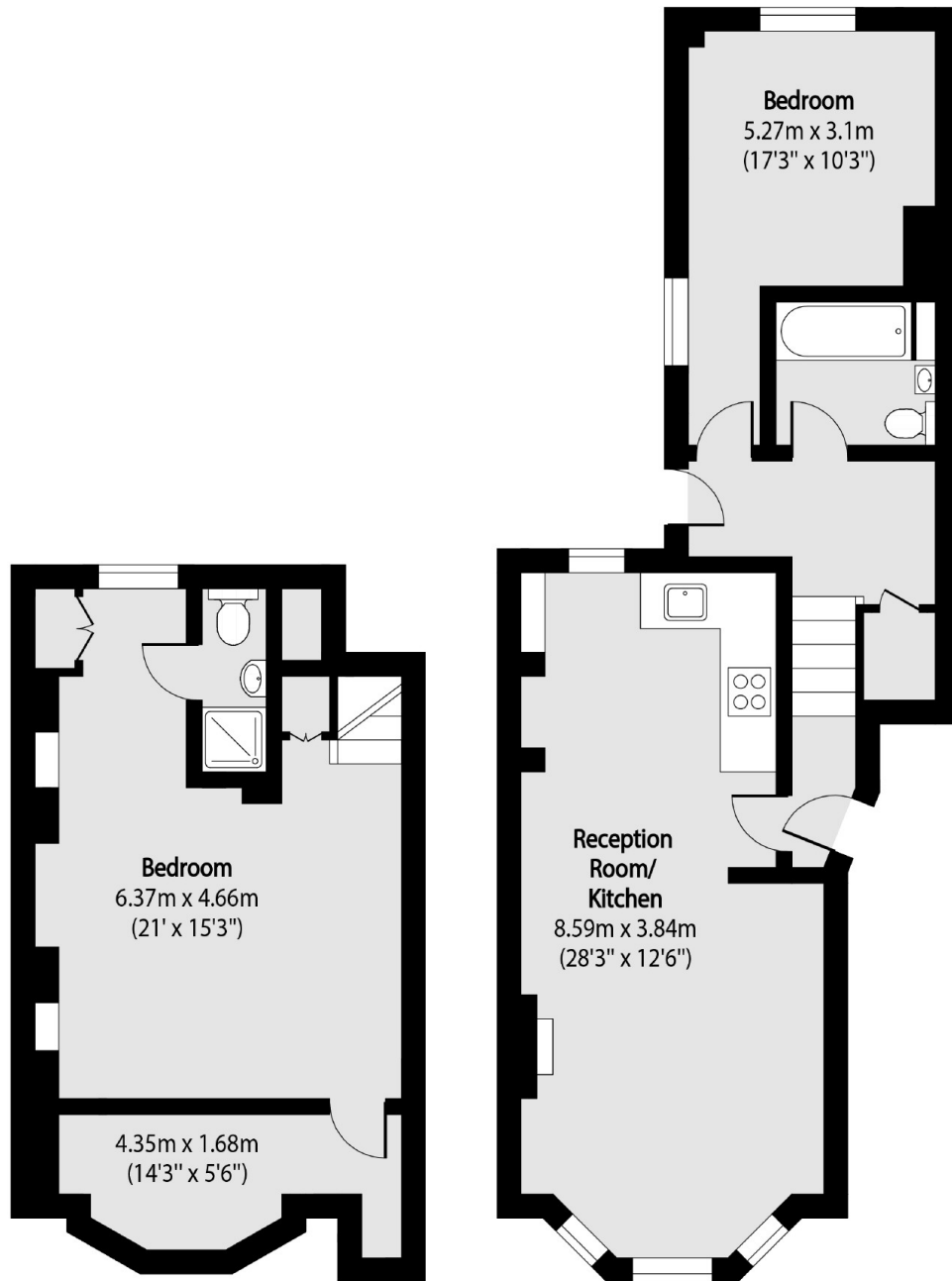
A well-presented two double bedroom apartment, arranged over two floors. This property benefits from a private garden, a large open plan reception room/kitchen and two bathrooms.

Located within walking distance of trendy Stroud Green Road and Finsbury Park station, which provides quick access to the City and the West End. The Parkland Walk nature reserve and Finsbury Park are also nearby.

Features

- Private Garden
- Chain Free
- Two Bedrooms
- Two Bathrooms
- Fantastic Transport Links
- Share of Freehold

Hanley Road, London, N4



Lower Ground Floor

Ground Floor

Total area (approx): 90.71 sq m (976sq. ft)

Dexters

Finsbury Park
87 Stroud Green Road
Finsbury Park
London
Sales
020 7483 6360

Energy Rating: C. We aim to make our particulars both accurate and reliable. However they are not guaranteed; nor do they form part of an offer or contract. If you require clarification on any points then please contact us, especially if you're traveling some distance to view. Please note that appliances and heating systems have not been tested and therefore no warranties can be given as to their good working order.

 **RICS** | Regulated
Estate Agent
and Letting Agent

dexters.co.uk