



Isledon Road, N7

£625,000

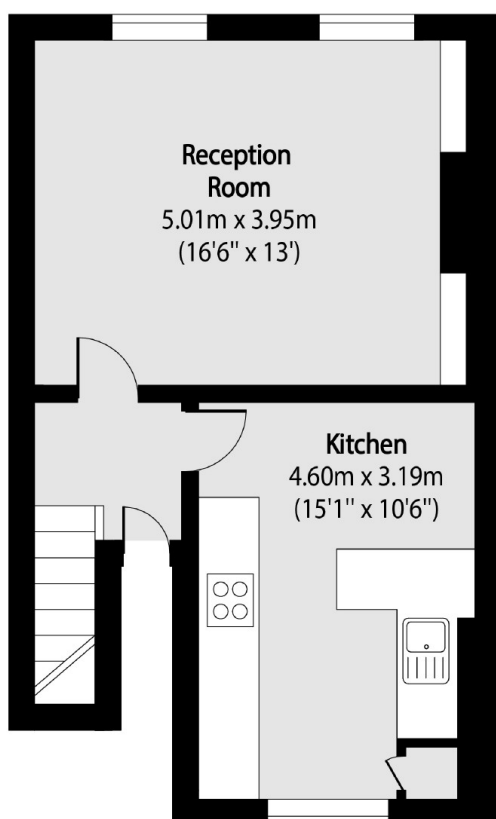
A well-presented two double bedroom apartment set on the first floor of a Victorian house. This property has an eat-in kitchen, a large reception room and has original features throughout.

Isledon Road offers easy access to Finsbury Park station and many bus routes. Nearby, you'll find Finsbury Park's green spaces and a great selection of supermarkets, eateries, coffee shops, wine bars, and bakeries.

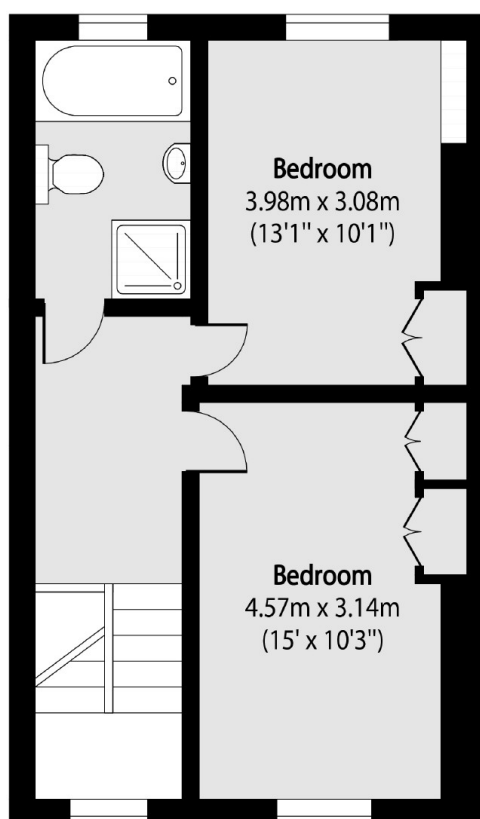
Features

- Two Double Bedrooms
- Victorian Conversion
- Eat-In Kitchen
- Separate Reception Room
- Original Features
- Excellent Transport Links

Isledon Road, London, N7



First Floor



Second Floor

Total area (approx): 82.89 sq m (892 sq. ft)