

Oakfield Road, N4

£715,000

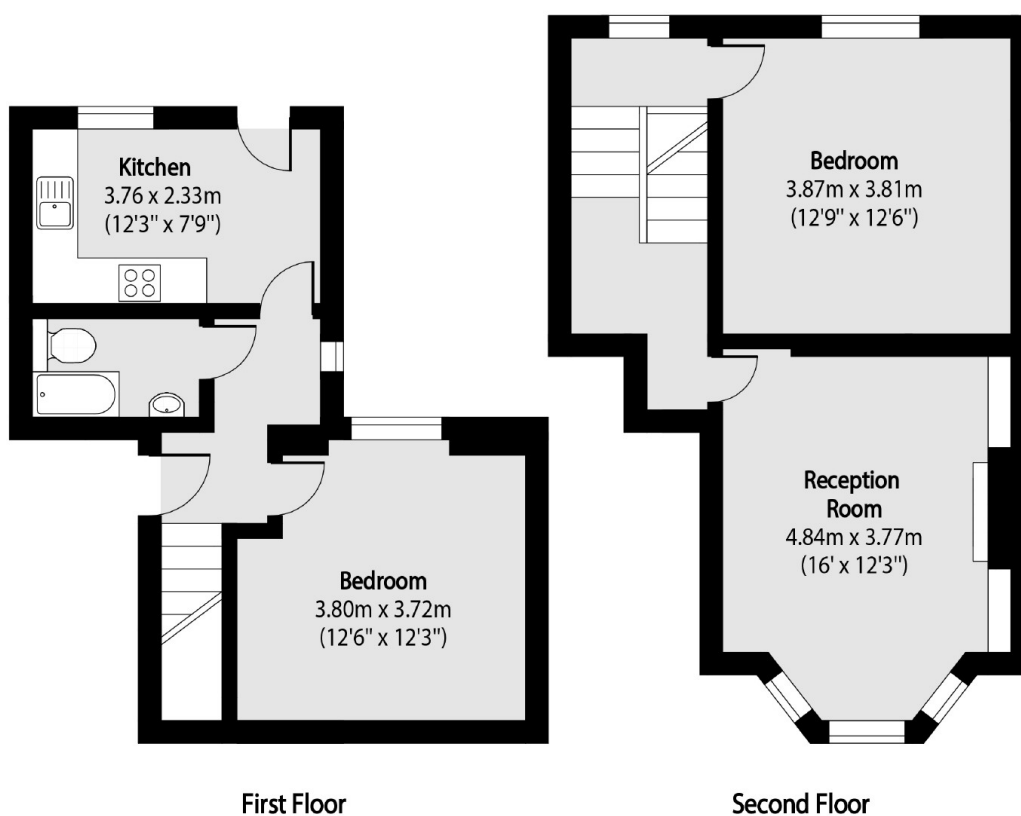
A well presented split-level upper maisonette of a Victorian conversion. This property offers two double bedrooms, a large reception room and a separate kitchen with stairs leading down to a private garden.

Oakfield Road is perfectly positioned on the western side of Finsbury Park, giving ease of access to Stroud Green and Crouch End. Ideally positioned for St Aidan's primary, rated as Ofsted outstanding, among several other schools.

Features

- Victorian Period Conversion
- Two Double Bedrooms
- Private Garden
- Share Of Freehold
- Split-Level
- Great Transport Links

Oakfield Road, London, N4



Total area (approx): 73.92 sq m (796 sq. ft)