



## Ray Walk, N7

### £700,000

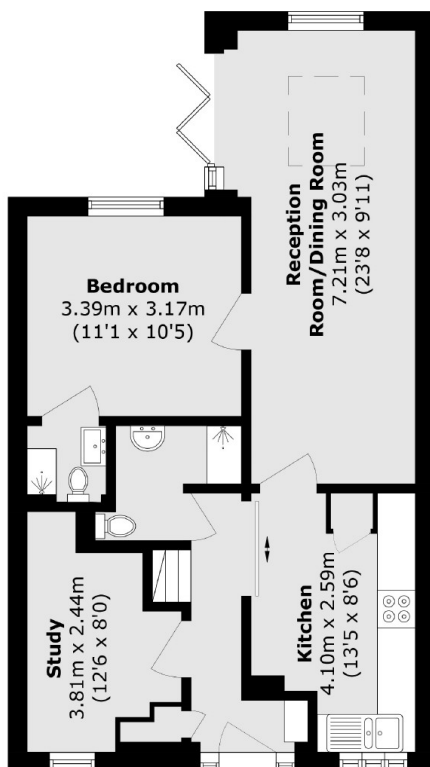
A rare opportunity to acquire two houses of multiple occupancy with a total annual rental income of £140,000. Both houses have five bedrooms, private gardens, and are sold with tenants in situ.

Ray Walk is well located between Finsbury Park, Archway and Tufnell Park. It offers easy access to the fantastic range of local shops, restaurants, coffee shops, and eateries along the popular Stroud Green Road and the surrounding area.

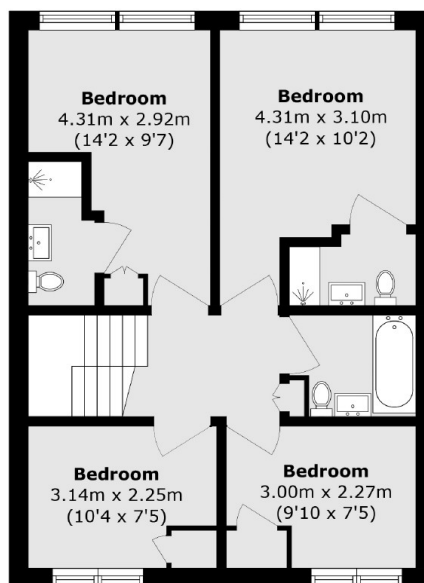
### Features

- Five/Six Bedrooms
- Freehold House
- Private Garden
- Good Condition
- House of Multiple Occupancy
- No Onward Chain

# Ray Walk, London, N7



**Ground Floor**



**First Floor**

Total area (approx.): 113.2 sq. m (1218.4 sq. ft)