

Burgoyne Road, N4

£625,000

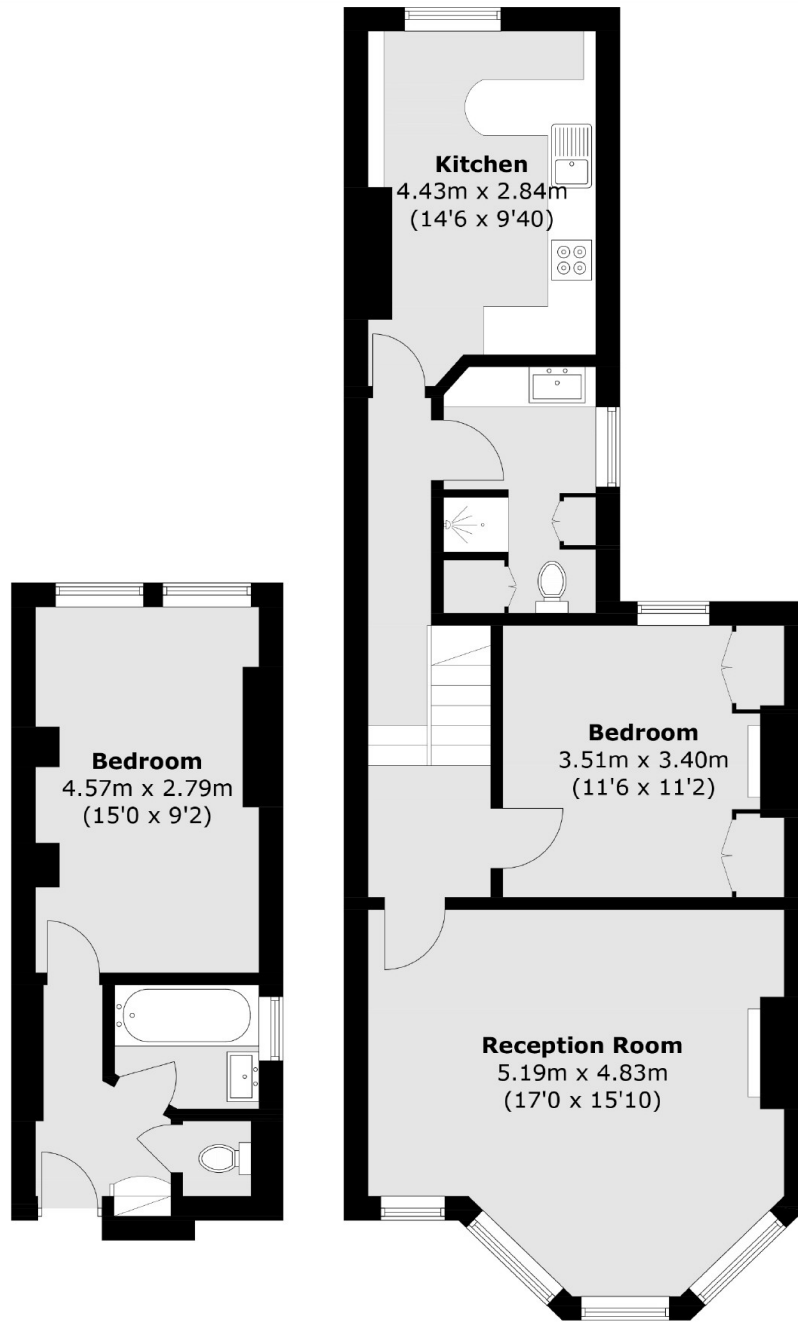
A well-presented split-level Victorian conversion, located on the popular 'Haringey Ladder'. The property has a spacious reception room, a separate kitchen, two double bedrooms (one with built-in storage). The property measures over 880 sq.ft and has potential to extend.

Burgoyne Road forms part of the Haringey Ladder, Green Lanes is just 200 feet away which offers an array of independent shops, restaurants, coffee shops. The green open spaces of Finsbury Park and all it has to offer are a short walk away so is, Manor House Underground and Haringey Overground both offering direct links to the City and beyond.

Features

- Victorian Conversion
- Haringey Ladder
- Two Bedrooms
- Two Bathrooms
- Good Transport Links
- Potential To Extend (STPP)

Burgoyne Road, London, N4



Upper Ground Floor

First Floor

Total area (approx.): 82.2 sq. m (884.8 sq. ft)

Dexters

Finsbury Park
87 Stroud Green Road
Finsbury Park
London
Sales
020 7483 6360

Energy Rating: D. We aim to make our particulars both accurate and reliable. However they are not guaranteed; nor do they form part of an offer or contract. If you require clarification on any points then please contact us, especially if you're traveling some distance to view. Please note that appliances and heating systems have not been tested and therefore no warranties can be given as to their good working order.

 **RICS** | Regulated
Estate Agent
and Letting Agent

[dexters.co.uk](https://www.dexters.co.uk)