



## Regina Road, N4

### £320,000

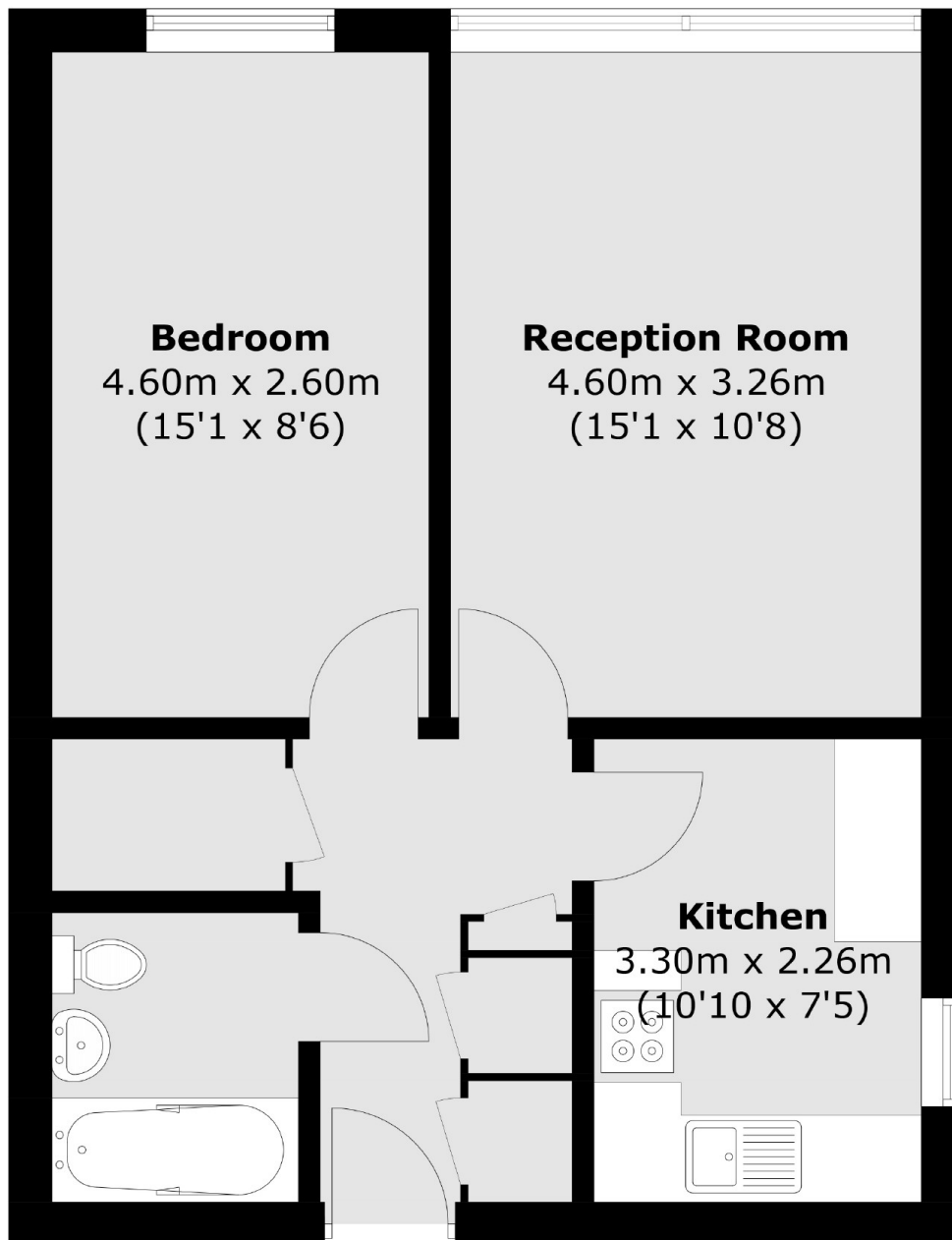
This one double bedroom flat is located on the third floor and offers 520 sq.ft of living space. The property is in good condition throughout and offers a spacious reception room, separate kitchen, and bathroom. There is also the option to apply for a parking space.

Regina Road is a quiet, tree-lined residential turning, perfectly positioned close to Finsbury Park station (Great Northern, Thameslink, Victoria and Piccadilly Lines) and the great selection of shops, bars, restaurants and cafés that the Finsbury Park and Stroud Green areas have to offer.

### Features

- Ideal For First Time Buyers
- Purpose Built
- One Bedroom
- Leasehold
- Lift & Secure Fob Entry
- Excellent Transport Links

# Regina Road, London, N4



Total area (approx.): 47.8 sq. m (514.5 sq. ft)

## Dexters

Finsbury Park  
87 Stroud Green Road  
Finsbury Park  
London  
Sales  
020 7483 6360

Energy Rating: C. We aim to make our particulars both accurate and reliable. However they are not guaranteed; nor do they form part of an offer or contract. If you require clarification on any points then please contact us, especially if you're traveling some distance to view. Please note that appliances and heating systems have not been tested and therefore no warranties can be given as to their good working order.

 **RICS** | Regulated  
Estate Agent  
and Letting Agent

dexters.co.uk