



Charles Street, N19

£530 Per week

A stunning two double bedroom apartment on the second floor of a converted warehouse. This spacious property benefits from an open plan kitchen/living area, high ceilings and lots of natural light throughout.

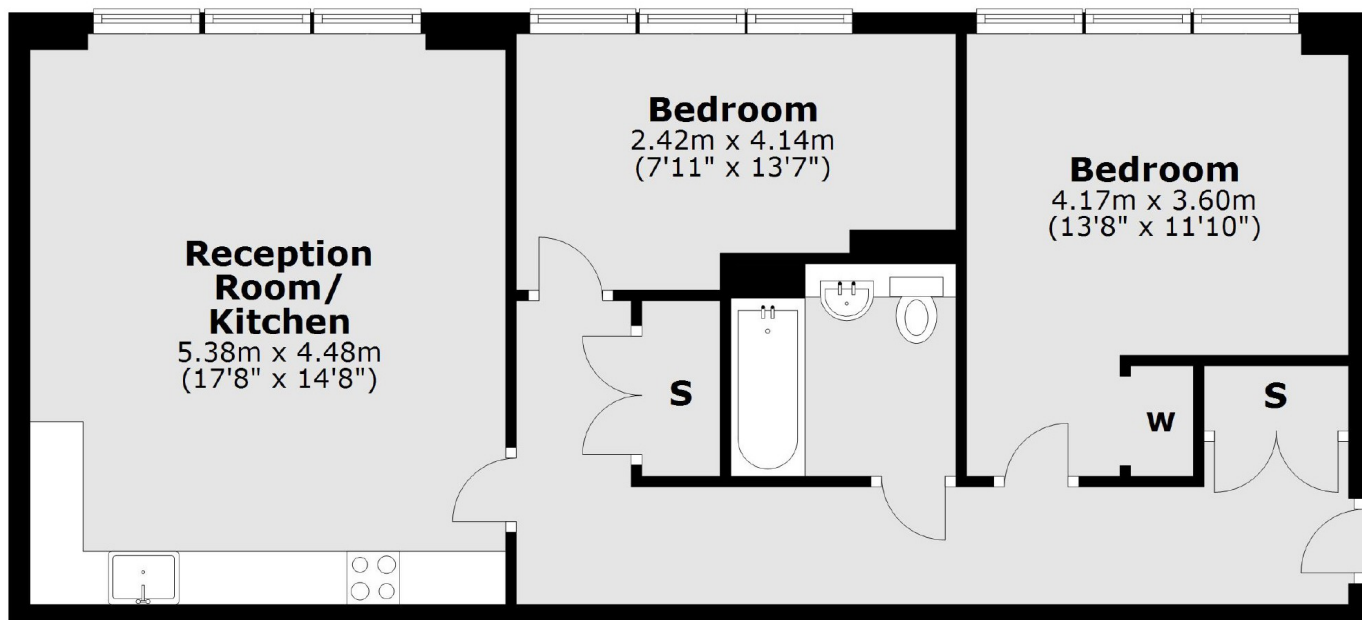
Located in an exclusive cul-de-sac close to Archway, Finsbury Park and Holloway Road stations. This popular area has a great many food, culture and shopping options, as well as numerous parks and green spaces.

Features

- Two Double Bedrooms
- Open Plan Kitchen/Living
- High Ceilings
- Bike Storage
- Modern
- Natural Light

Charles Street,
London, N19

Second Floor



Total area: approx. 66.9 sq. metres (720.0 sq. feet)