



Etherley Road, N15

£800,000

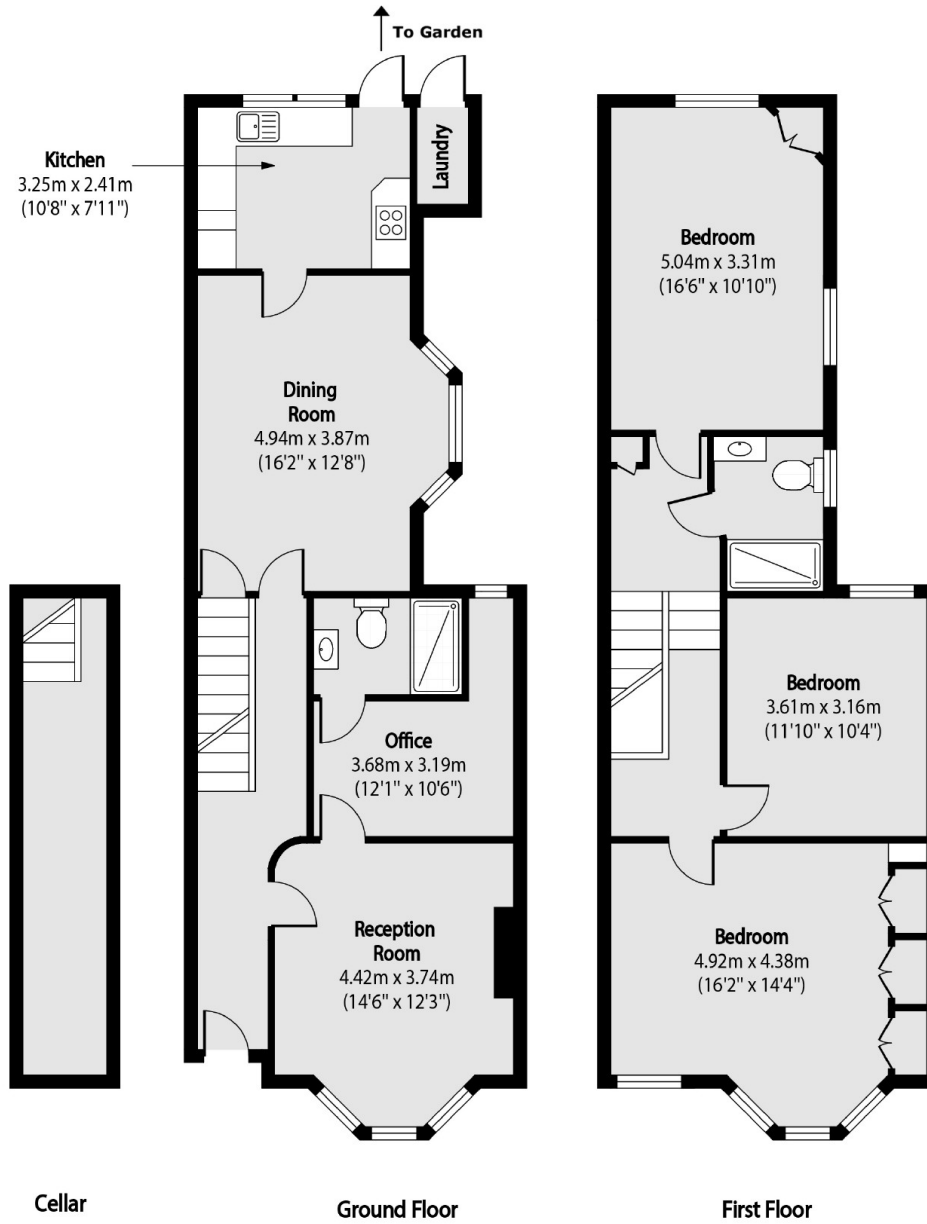
A beautiful three-bedroom Victorian house offering generous entertaining space complete with landscaped garden and period features including bay window, ceiling cornicing and wood flooring. Stepping from the storm porch, the ground floor offers two reception rooms, an office room, a bathroom with a walk-in shower and a separate kitchen to the rear.

Located on a quiet residential street and close to Turnpike Lane Station, Harringay Green Lanes Station and Seven Sisters Station. It also is close to the popular open green spaces of Downhills Park and within the catchment for Seven Sisters Primary School.

Features

- Three Bedroom
- Freehold
- Chain Free
- Good Transport Links
- Private Garden
- Chain Free

Etherley Road, London, N15



Total area (approx): 135.74 sq m (1461 sq. ft)

Laundry Total area (approx): 1.20 sq m (13 sq. ft)