



Stroud Green Road, N4 £400,000

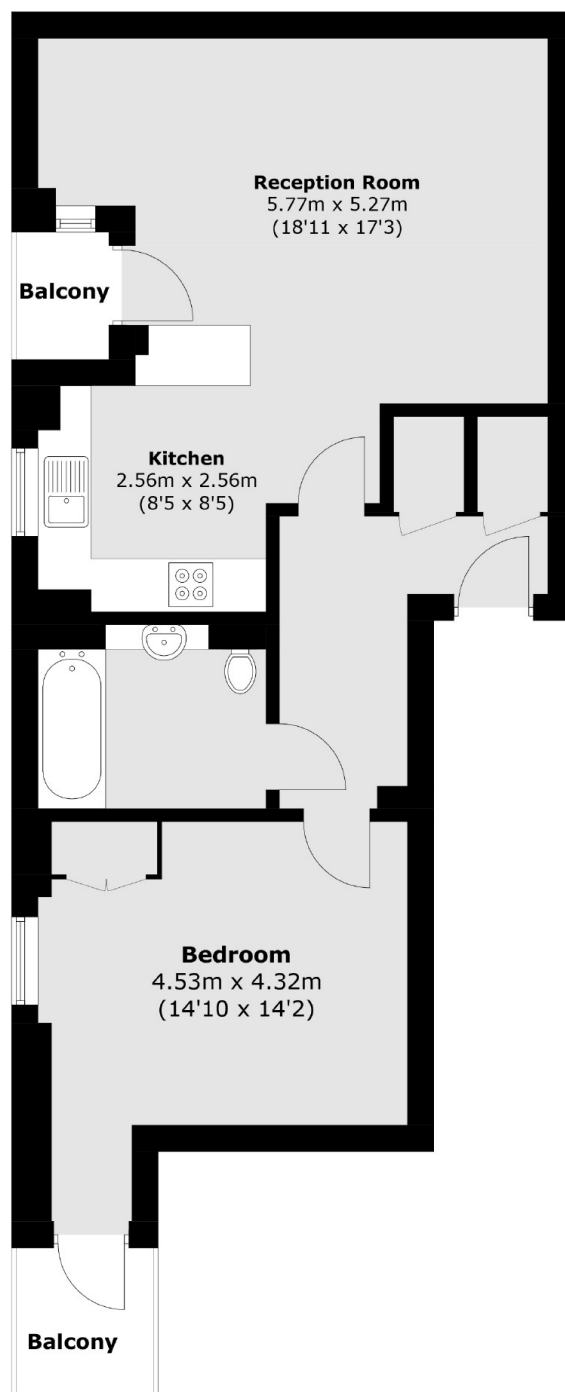
This spacious first-floor double-bedroom apartment is situated within a modern development, offering over 600 sq.ft of living space and ample storage throughout. The property features two balconies, accessible from both the reception room and the bedroom. Ideal for a first-time buyer, the flat is being offered to the market chain-free.

Stroud Green Road is ideally situated for local shopping, a selection of restaurants, cafés, and supermarkets. The area benefits from excellent transport links, with Finsbury Park station (serving the Victoria and Piccadilly Lines) just a short walk away, offering convenient access to both the Underground and mainline services, making it easy to reach central London and beyond.

Features

- One Double Bedroom
- Chain Free
- Leasehold
- Two Balconies
- Great Location
- Excellent Transport Links

Stroud Green Road, London, N4



Total area (approx.): 60.8 sq. m (654.4 sq. ft)
Balcony: 4.0 sq.m (43.0 sq. ft)