



Romilly Road, N4

£507 Per week

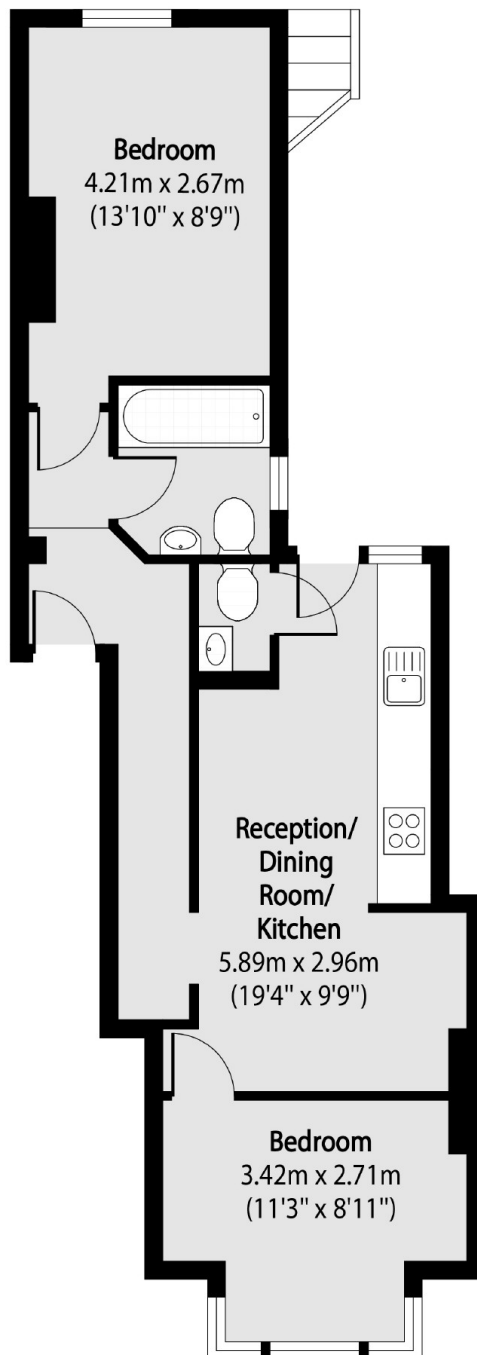
A two bedroom property on Romily Road. This apartment has two double bedrooms, an open plan living space and two bathrooms, it also benefits from a shared garden.

Romilly Road is located within the Blackstock Triangle and is within the catchment area of 'outstanding' Ambler Road Primary School. Spoilt for choice for green space, you are within easy reach of Clissold Park, Finsbury Park and local nature reserve Gillespie Park.

Features

- Council Tax Included
- Two Bedrooms
- Two Bathrooms
- Shared Garden
- Furnished
- Available Now

Romilly Road,
London, N4



Total area (approx): 46.41 sq m (500 sq. ft)