



Anax Street, N4

£576 Per week

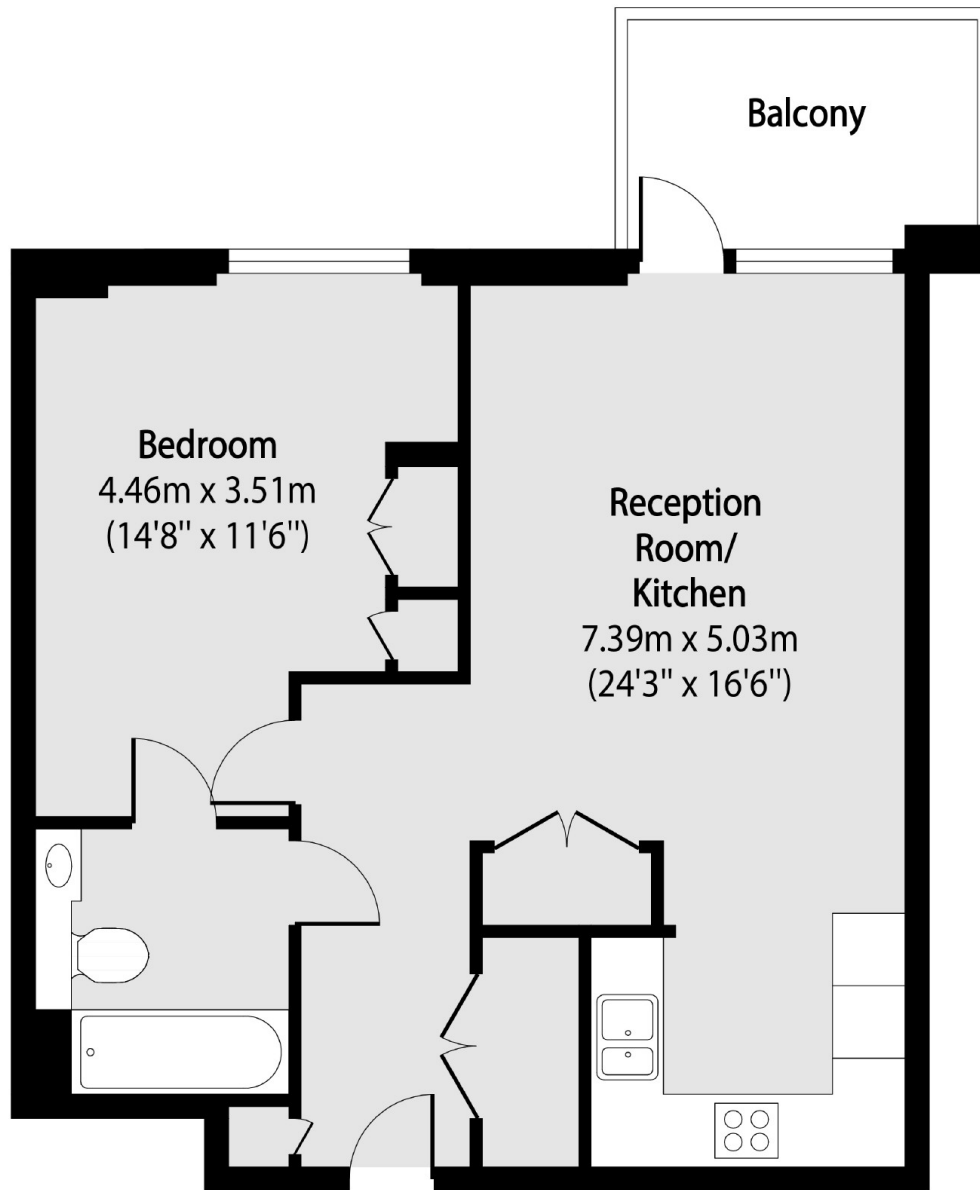
A spacious one bedroom apartment in the brand new Hawker House Development. This property is located on the top floor of the building and has an open plan living area which leads out to a private balcony, a big double bedroom with floor to ceiling windows and a spacious bathroom. The development has a concierge and business suites.

Woodberry Down is ideally located within easy reach of Manor House station as well as the green open space of Finsbury Park.

Features

- One Bedroom
- Open Plan
- Private Balcony
- Concierge
- Access to Gym and Swimming Pool
- Great Transport Links

Anax Street,
London, N4



Total area (approx): 51.90 sq m (559 sq. ft)

Balcony total area (approx): 5.39 sq m (58 sq. ft)