



Tollington Park, N4

£426 Per week

Situated on the third floor of a small private development in the heart of vibrant Finsbury Park. Presented in good decorative order throughout, this property offers a double size bedroom, separate kitchen and living room, bathroom and a communal garden.

Tollington Park is near Finsbury Park station (Great Northern, Thameslink, Victoria and Piccadilly Lines) and the great selection of shops, bars, restaurants and cafés that the Finsbury Park and Stroud Green area have to offer.

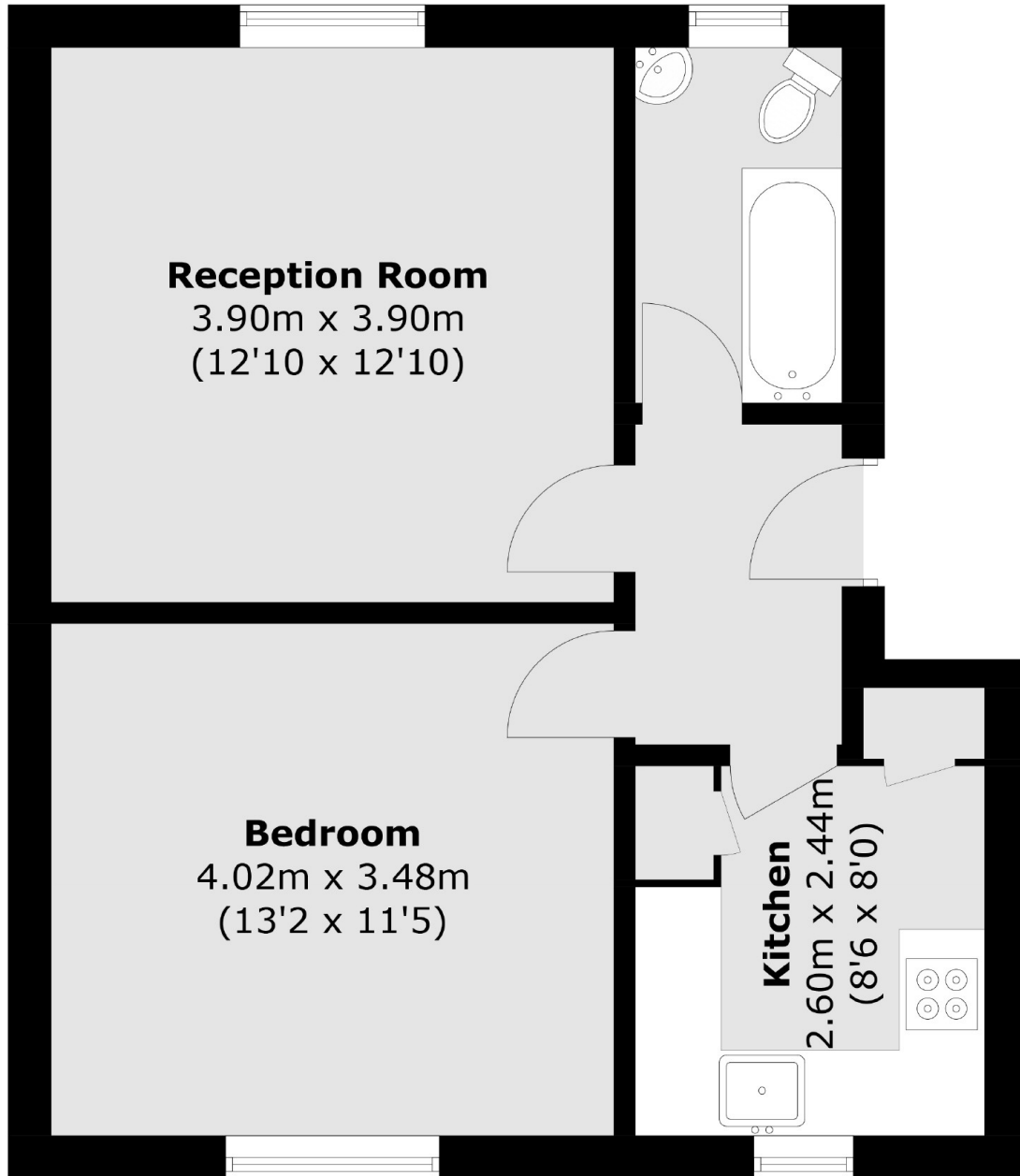
Features

- One Bedroom
- Third Floor
- Private Block
- Great Location
- Close To Transport Links
- Communal Garden



Tollington Park, N4

Tollington Park,
London, N4



Second Floor

Total area (approx.): 45.7 sq. m (491.9 sq. ft)