



Woodberry Grove, N4

£692 Per week

A well presented two bedroom apartment in the Woodberry Down development. This property has an open plan living area which leads out to a private balcony, two double bedrooms and two bathrooms. The development has a concierge and access to a gym.

Woodberry Down is ideally located within easy reach of Manor House station as well as the green open space of Finsbury Park.

Features

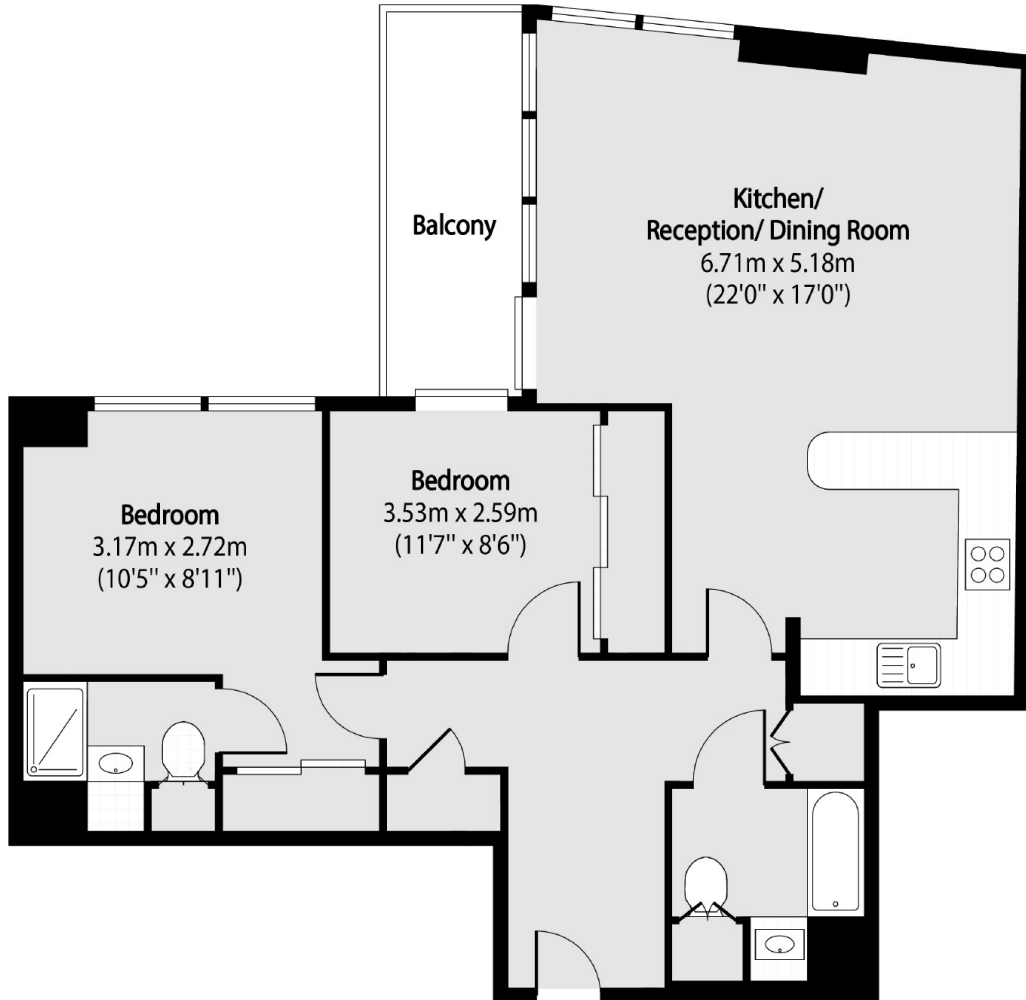
- Two Bed
- Two Bath
- Balcony
- Open Plan
- Gym and Concierge
- Great Transport Links



Woodberry Grove, N4



Woodberry Grove,
London, N4



Total area (approx): 70.79 sq m (762 sq. ft)

Balcony total area (approx): 5.94 sq m (64 sq. ft)