



Seven Sisters Road, N4

£475,000

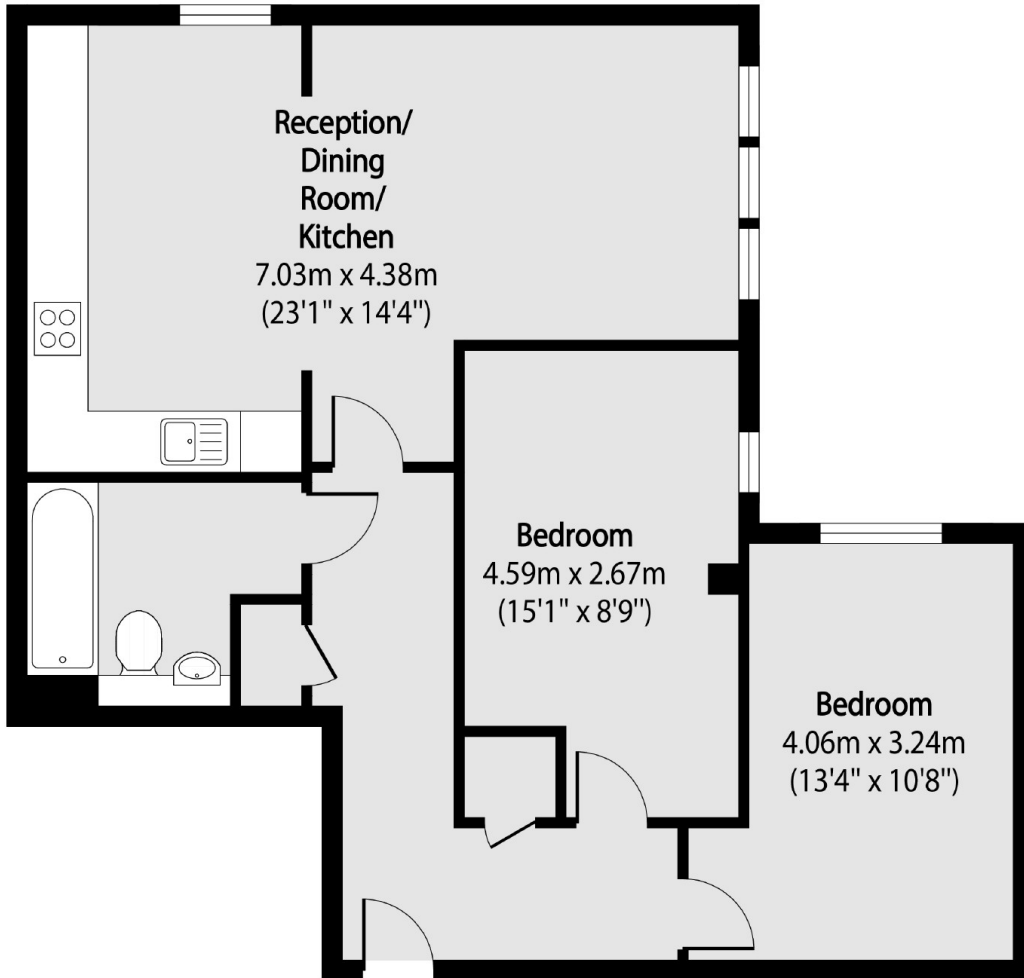
A two double bedroom flat located in a modern development spanning just over 700 sq.ft. The property offers an open plan reception/kitchen, ample storage and a communal garden.

Seven Sisters Road is located close to Finsbury Park Station (Great Northern, Thameslink, Victoria and Piccadilly Lines) as well as an array of independent shops, bars, restaurants and cafés. The property is a short walk away from the green open spaces of Finsbury Park, Clissold Park and Woodberry Wetland nature reserve.

Features

- Modern Development
- Two Double Bedrooms
- Leasehold Details
- Open Plan Reception/Kitchen
- Communal Gardens
- Good Transport Links

Seven Sisters Road,
London, N4



Total area (approx): 67.51 sq m (727 sq. ft)