



Gloucester Drive, N4
£1,150,000

Dexters



Gloucester Drive, N4

A well-presented ground and lower ground level apartment set within an attractive Victorian villa, providing over 1,300 sq.ft of living space and sole use of a garden.

The ground floor features an open-plan reception, kitchen, and dining area, ideal for entertaining, with bi-folding doors leading to a decked garden. This floor also includes a versatile bedroom that could serve as an office, ample storage, and a W.C.

On the lower ground floor, you'll find the principal bedroom with an en-suite, along with two additional double bedrooms one with an en-suite and a family bathroom. The rear bedroom also provides direct access to the decked garden.

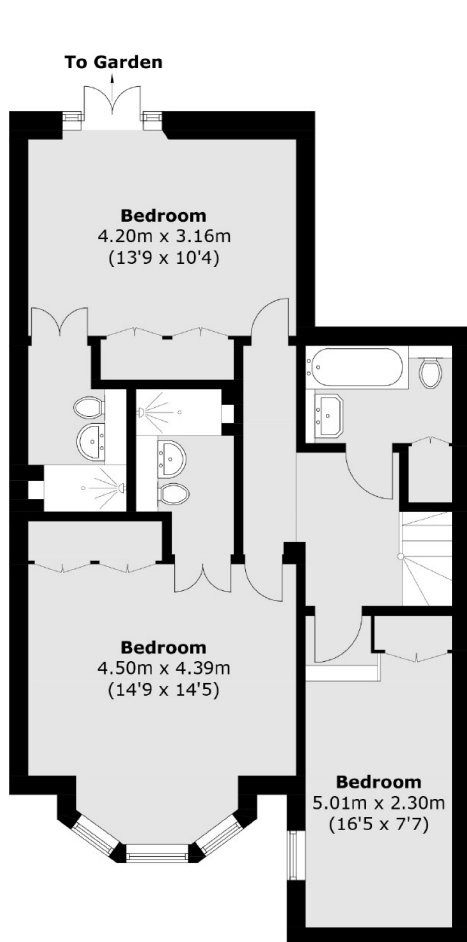
Gloucester Drive is ideally positioned for easy access to the green open spaces of Finsbury Park, Clissold Park and Woodberry Wetland nature reserve. An array of shops, cafes and eateries are located along nearby Blackstock Road along with a good selection of bus routes giving easy access to the West End and beyond.

Features

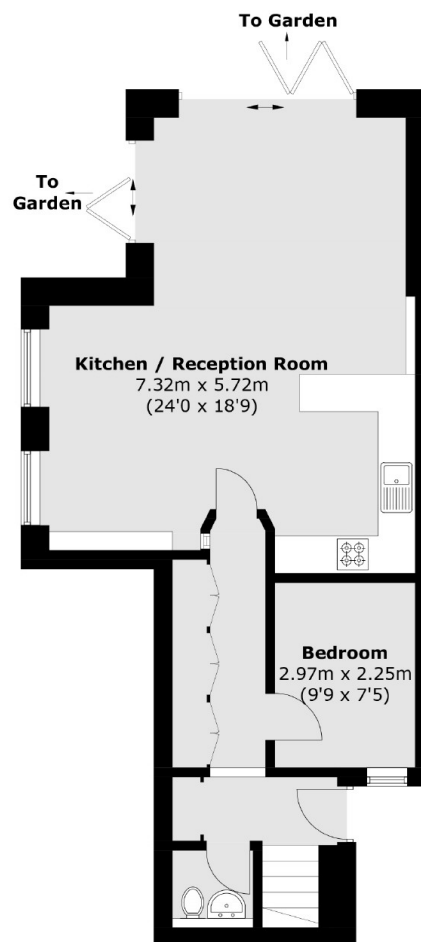
- Four Bedrooms
- Open Plan Reception/Kitchen
- Three Bathrooms
- Share of Freehold
- Garden
- Chain Free



Gloucester Drive, London, N4



Lower Ground Floor



Ground Floor

Total area (approx.): 127.9 sq. m (1376.7 sq. ft)