



Seven Sisters Road, N7

£580,000

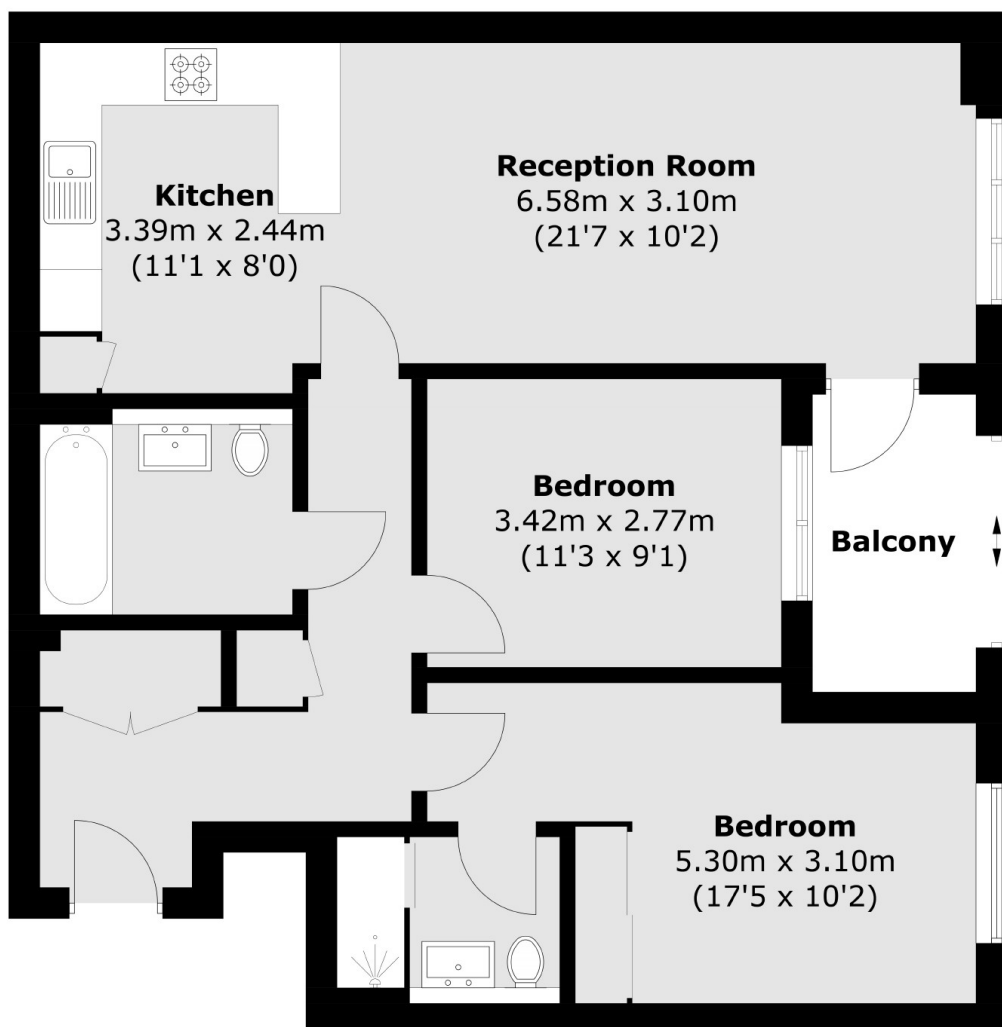
A modern, two bedroom, two bathroom, contemporary apartment, with double glazing and lift access. The property offers an open-plan reception, with a modern fitted kitchen with direct access to a private winter garden.

Seven Sisters Road is well-located for access to Finsbury Park station (Piccadilly line, Victoria line and National Rail) and is also close to plethora of nearby independent shops, bars, restaurants, coffee shops and shopping facilities. The green open spaces of Finsbury Park are also close by.

Features

- Modern Development
- Two Bedroom
- Two Bathroom
- Balcony
- Leasehold
- Excellent Transport Links

Seven Sisters Road, London, N7



Total area (approx.): 73.6 sq. m (792.2 sq. ft)
Balcony area (approx.): 4.8 sq. m (51.7 sq. ft)