



## Blackstock Road, N4

£560,000

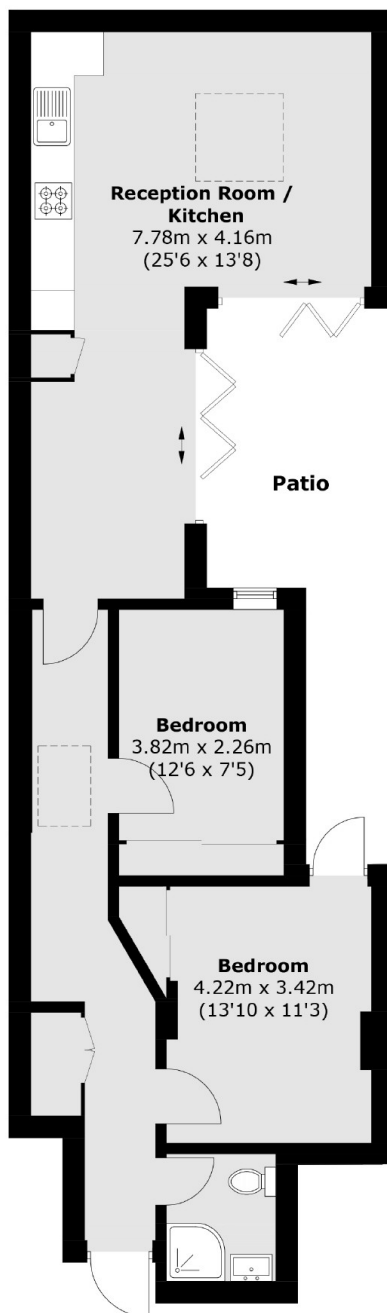
A beautifully presented two double bedroom garden flat spanning over 600 sq.ft. The property features an open-plan kitchen and reception area filled with natural light, a contemporary bathroom suite, excellent storage, and a private patio garden.

Blackstock Road is ideally positioned for easy access to the green open spaces of Clissold Park, Finsbury Park and Woodberry Wetland nature reserve. A number of shops, cafes and eateries are located on Blackstock Road along with a good selection of bus routes.

### Features

- Two Double Bedroom
- Chain Free
- Excellent Condition
- Leasehold
- Patio
- Good Location

# Blackstock Road, London, N4



Total area (approx.): 60.3 sq. m (649.1 sq. ft)