



Upper Tollington Park, N4

£695,000

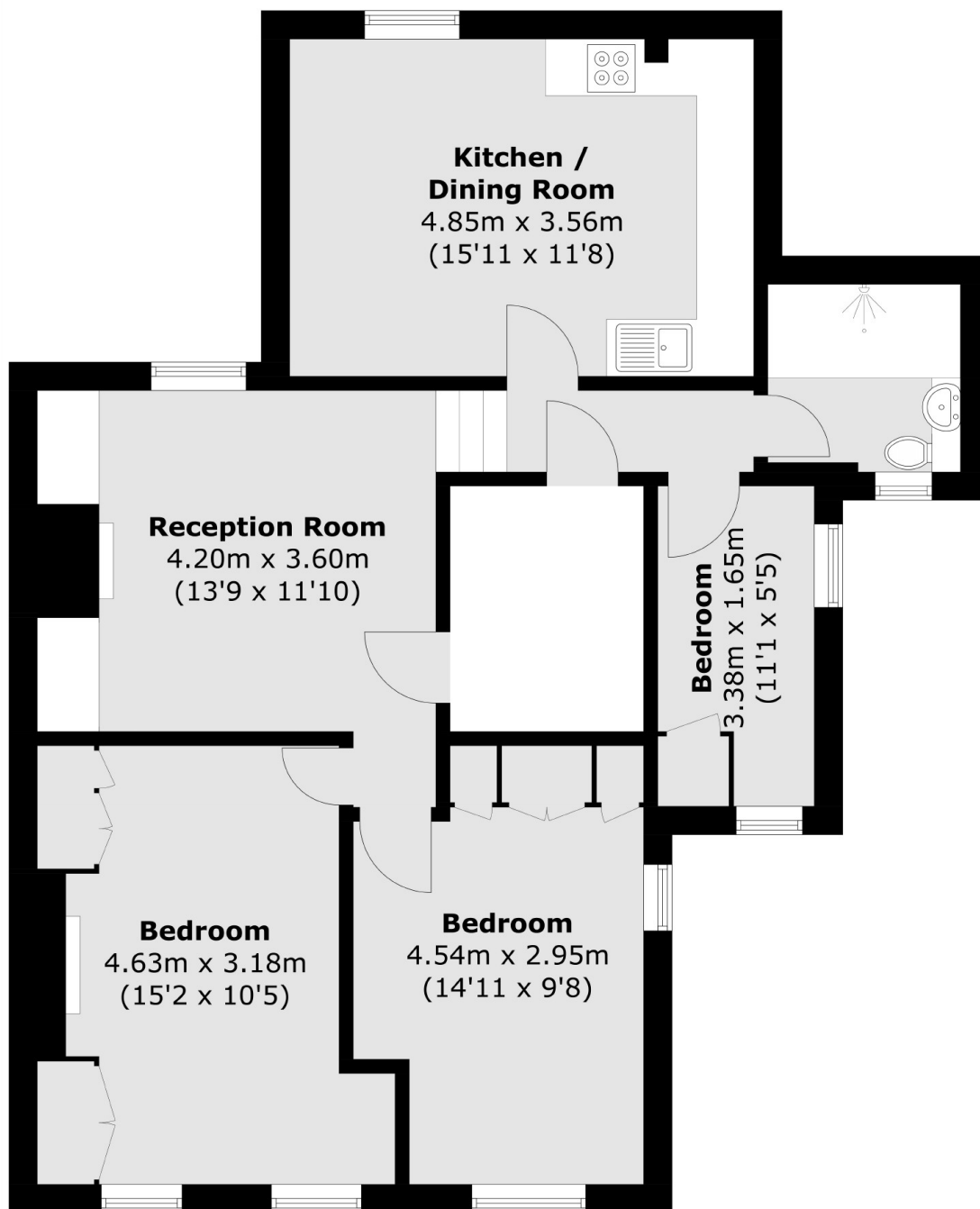
A newly decorated first floor flat with two double bedrooms, an additional third bedroom which is ideal for a study or a nursery, a spacious reception room, a large separate kitchen with ample room for dining and a modern bathroom.

Upper Tollington Park is close to Finsbury Park station (Great Northern, Thameslink, Victoria and Piccadilly lines) and the great selection of shops, cafés and restaurants that Finsbury Park and Stroud Green have to offer.

Features

- Three Bedrooms
- Share of Freehold
- Victorian Conversion
- Close to Finsbury Park
- Great Transport Links
- Recently Renovated

Upper Tollington Park, London, N4



Total area (approx.): 77.5 sq. m (834.2 sq. ft)