



Tiltman Place, N7

£426 Per week

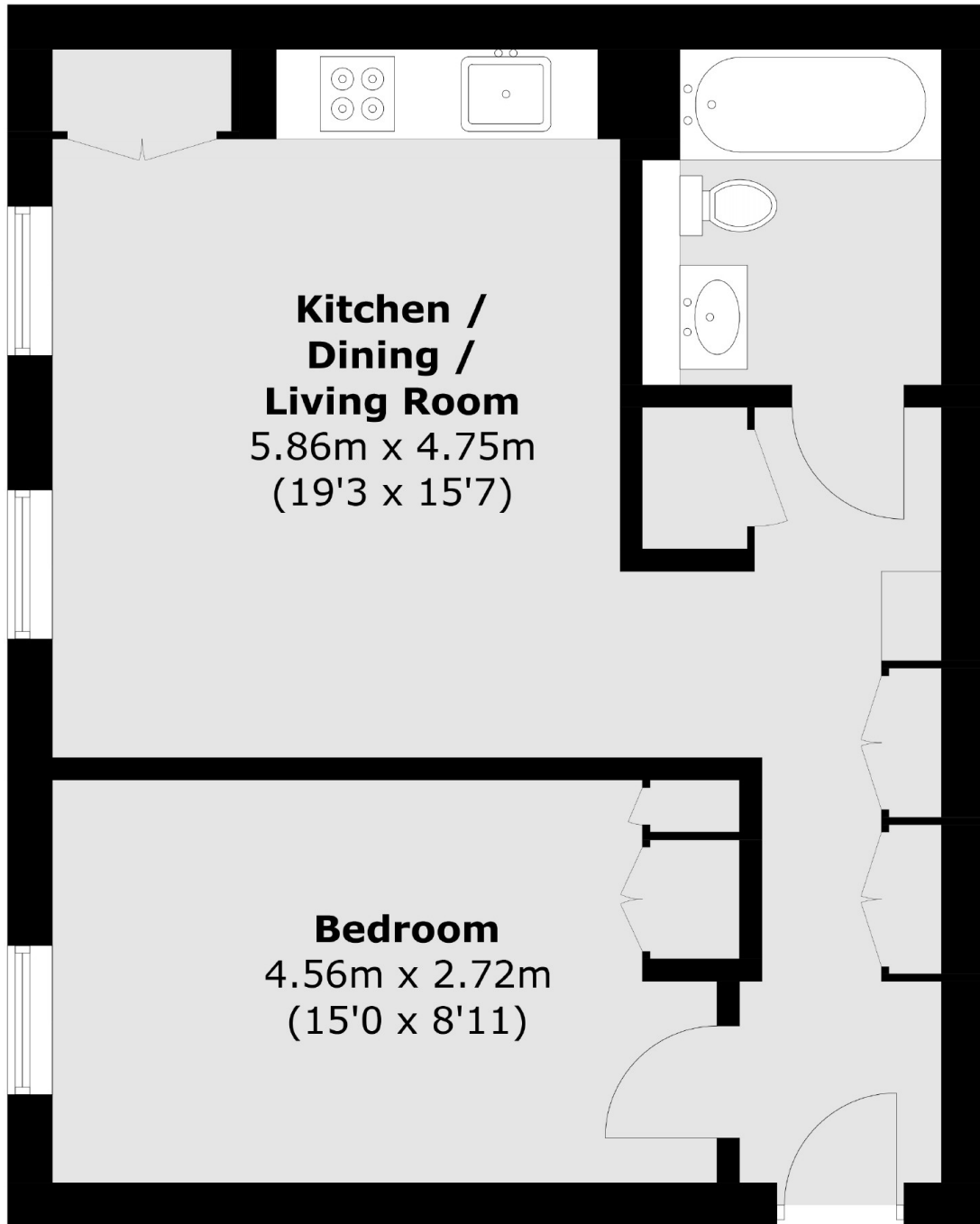
A bright and spacious one bedroom property in a private development. This apartment has an open plan living area with wooden flooring throughout, and large double bedroom.

Tiltman Place is ideally located for the many amenities of Holloway Road in addition to a variety of local transport links.

Features

- One Bedroom
- Open Plan
- Wood Flooring
- Private Development
- 24 Hour Concierge
- Available August

Tiltman Place,
London, N7



Total area (approx.): 45.3 sq. m (487.6 sq. ft)