



Mount Pleasant Crescent, N4

£980 Per week

A bright and well presented four bedroom house set over three floors, measuring 1,800 sq.ft. Located on a very popular road with easy access to a variety of shops and transport links of Finsbury Park and Crouch Hill.

Mount Pleasant Crescent is a quiet residential street. You have a great choice of shops, bars, pubs, restaurants and cafés that Stroud Green have to offer.

Features

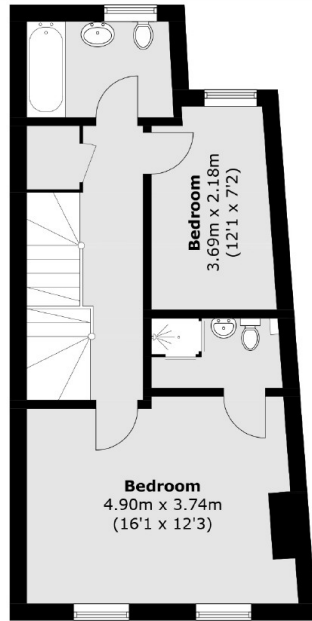
- Four Bedroom House
- Separate Kitchen
- Double Reception Room
- Private Garden
- Great Location
- Close to Amenities



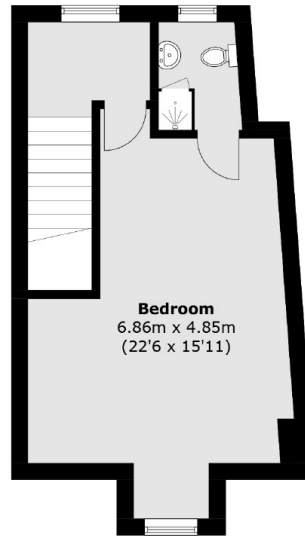
Mount Pleasant Crescent, N4



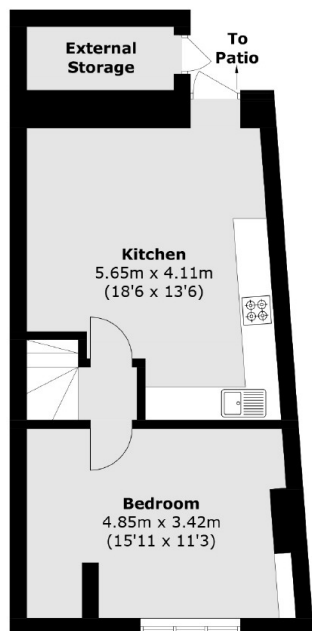
Mount Pleasant Crescent, London, N4



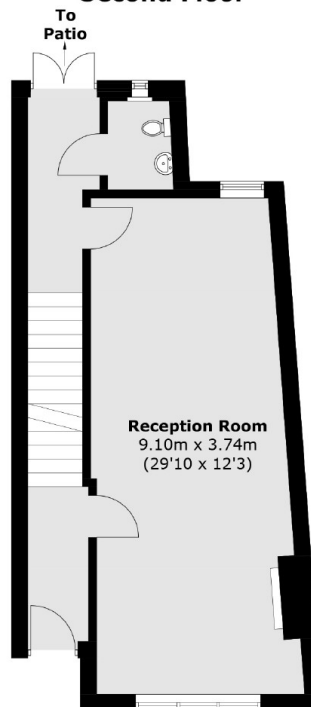
First Floor



Second Floor



Lower Ground Floor



Ground Floor

Total area (approx.): 167.5 sq. m (1,802.9 sq. ft)
External Storage (approx.): 3.1 sq. m (33.4 sq. ft)