



Crouch Hill, N8

£585,000

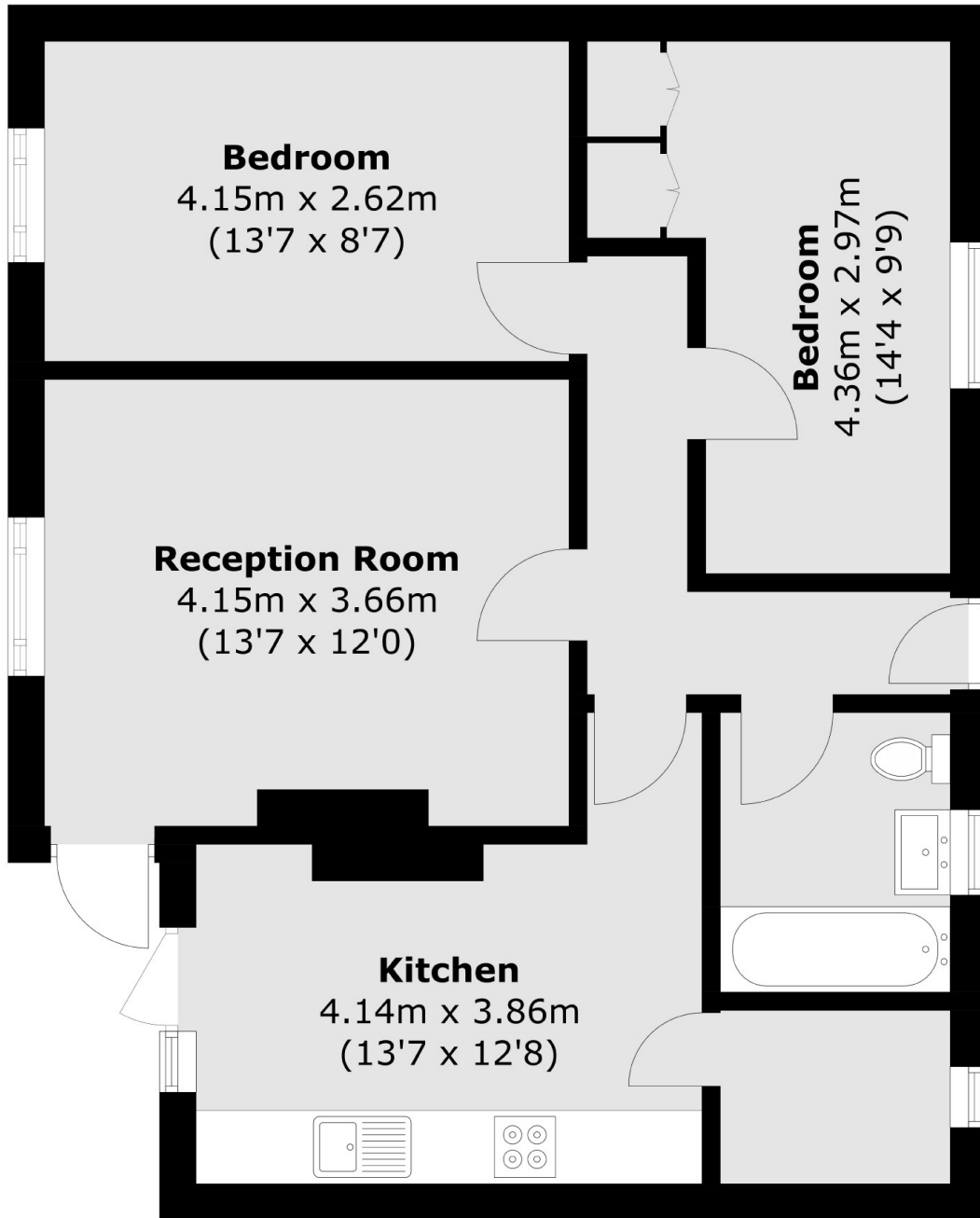
This two double bedroom flat is located on the ground floor of this purpose built block. The property has a spacious reception with wooden flooring, a separate kitchen and room to dine. Both rooms have direct access to the south facing garden.

Coleman Mansions sits on the borders of Crouch End with easy access to the array of shops on the Broadway and Ofsted outstanding' St. Aiden's primary school 0.1m. The popular Stroud Green Road is also within easy walking distance with Crouch Hill Station just 0.4m. Both Finsbury Park and Parkland Walk are very close by.

Features

- Purpose Built Block
- Ground Floor
- Two Bedrooms
- Share of Freehold
- Garden
- Great Location

Crouch Hill, London, N8



Total area (approx.): 66.0 sq. m (710.4 sq. ft)