



Tollington Park, N4

£830 Per week

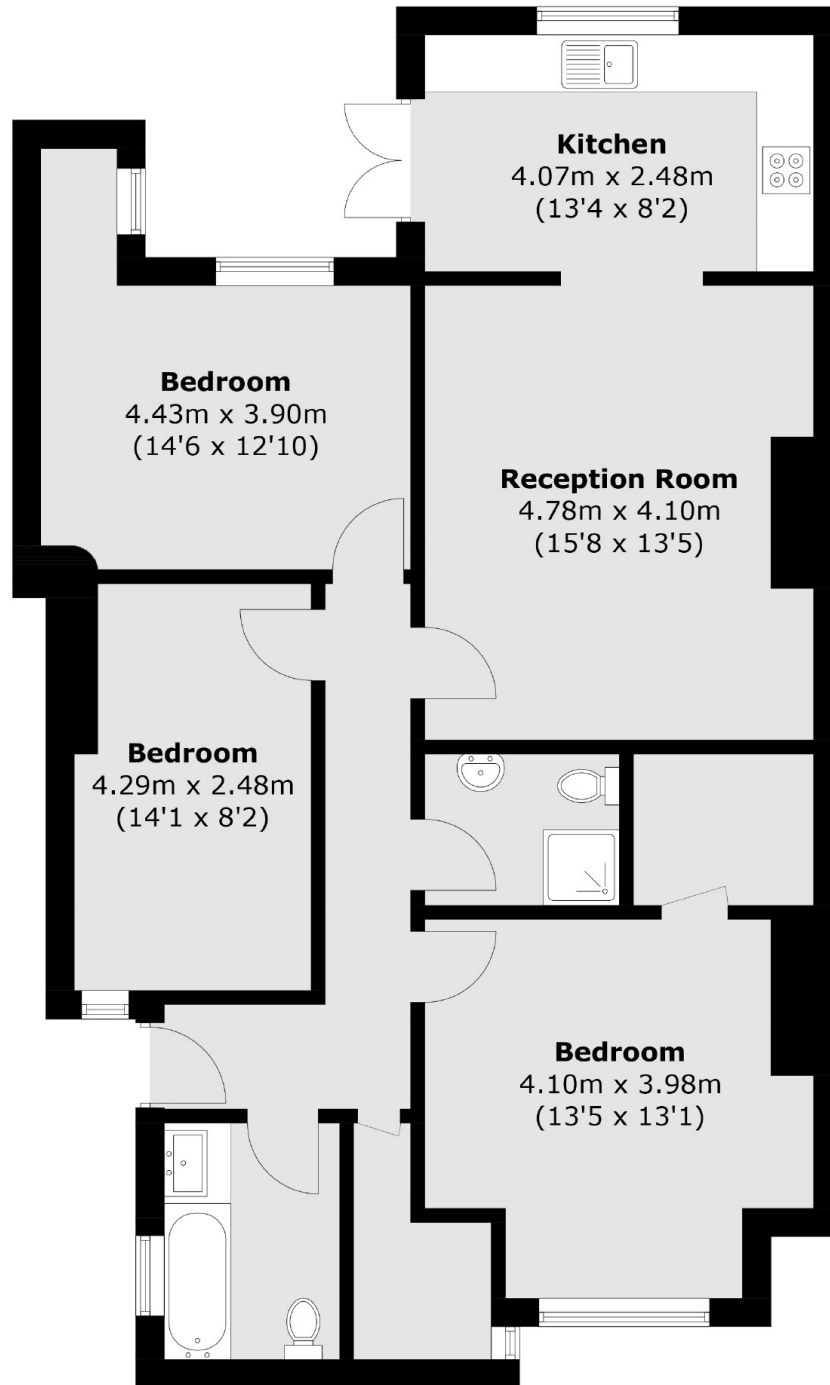
A three bedroom property on Tollington Park. This lovely apartment has an open plan living area, three double bedrooms, two bath and a private garden. The property is offered furnished.

Located on Tollington Park and within easy reach of the local shops and cafes on both Stroud Green and Hornsey Road. Finsbury Park underground station is a short distance away for access to Victoria, Piccadilly and mainline services.

Features

- Three Double Bedrooms
- Modern Finish
- Open Plan
- Furnished
- Period Conversion
- Great Location

Tollington Park, London, N4



Total area (approx.): 95.2 sq. m (1,024.7 sq. ft)