



Rokesly Avenue, N8

£600,000

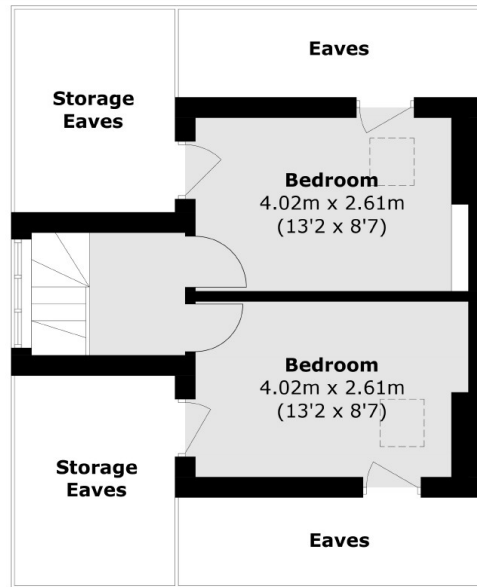
A charming three-bedroom split-level flat located on the first and second floors of a Victorian house. The first floor features a spacious reception room with high ceilings and bay windows, a principal bedroom, a family bathroom, and a separate W.C. The second floor offers two additional bedrooms and ample storage in the eaves.

Rokesly Road is ideally located in the heart of Crouch End, offering a wide array of shops, restaurants, and coffee shops. The property is also just moments away from excellent transport links, with local bus routes providing direct access to Finsbury Park station within minutes. Additionally, both Weston Park Primary and St Aidan's School are within a short distance.

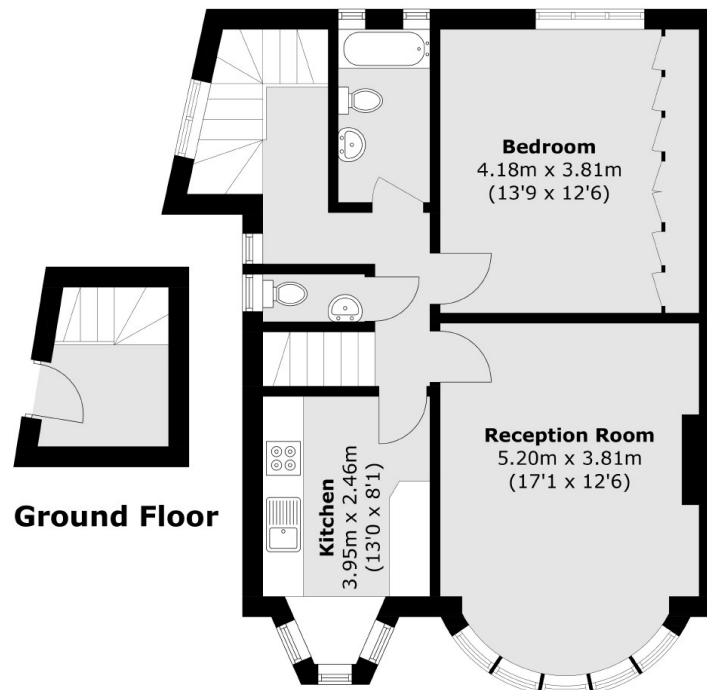
Features

- Three Bedroom
- Leasehold
- Chain Free
- Close To The Broadway
- Excellent Transport Links
- Close To Schools

Rokesly Avenue, London, N8



Second Floor



First Floor

Total area (approx.): 90.0 sq. m (968.7 sq. ft)
(Excluding Eaves)