

## Salisbury Road, N4

£369 Per week

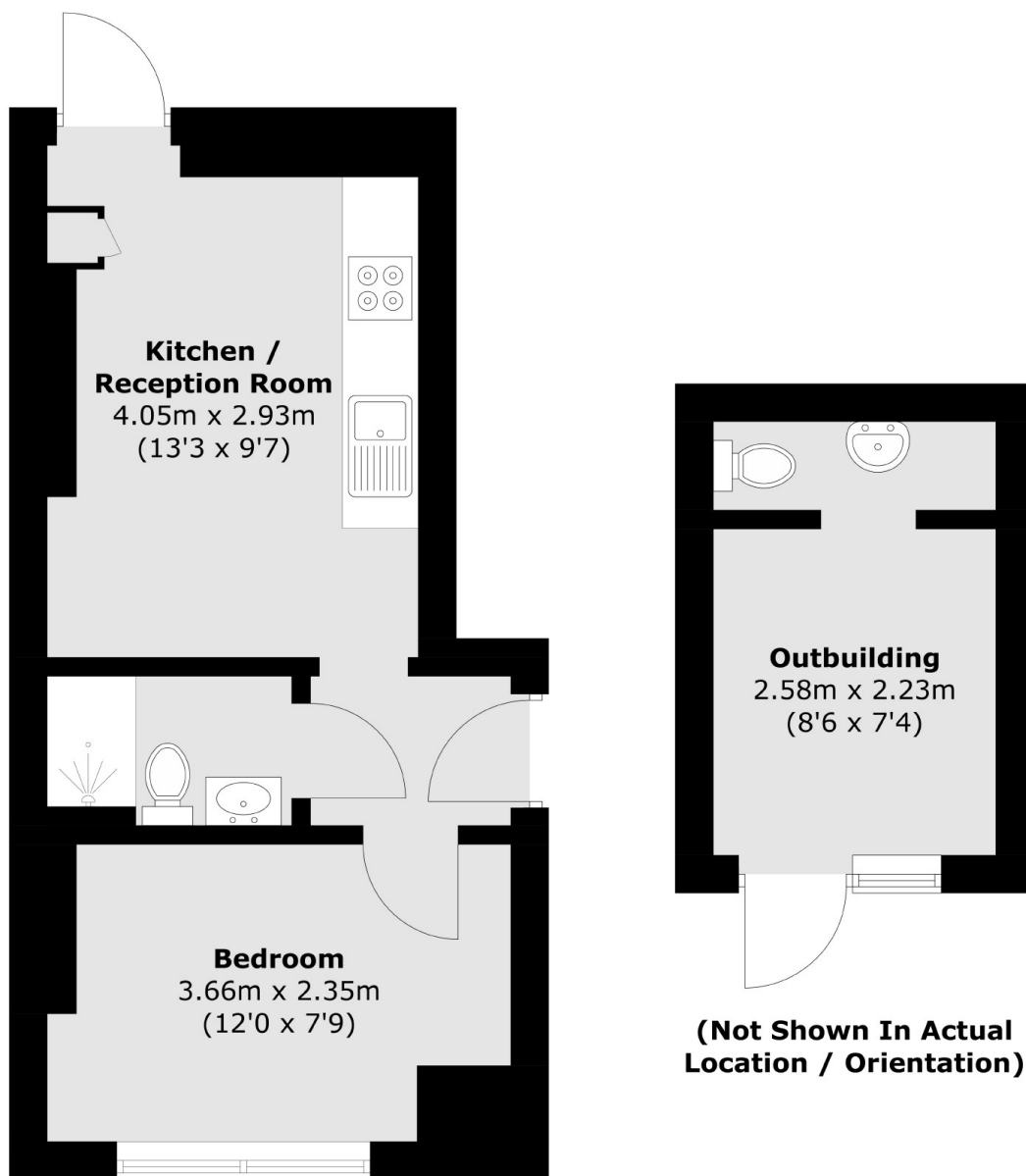
A one double bedroom property on the ground floor of this period conversion. This property is finished to a high standard through out and comes fully furnished. The private garden leads to great home office / studio equipped with a W.C

Salisbury Road is located just off Green Lanes where you can find a great selection of bars, shops and cafe's.

### Features

- One Bedroom
- Open Plan
- Private Garden
- Separate Home Office
- Great Location
- Great Transport Links

# Salisbury Road, London, N4



Total area (approx.): 26.0 sq. m (279.9 sq. ft)  
Outbuilding area (approx.): 7.8 sq. m (83.9 sq. ft)