



Hampden Road, N8

£507 Per week

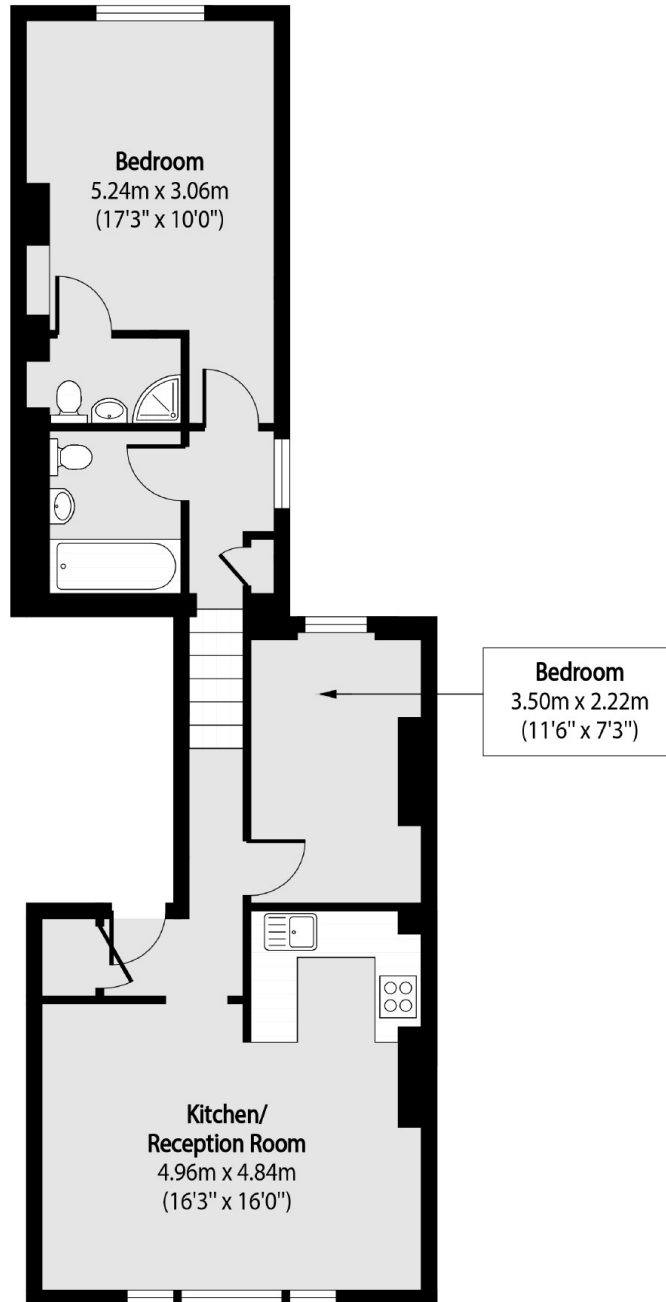
A two bedroom, two bathroom property on the Harringay Ladder. This period conversion is split over two floors and benefits from an open plan living area with a full integrated kitchen, two double bedrooms and two bathrooms. The property is offered unfurnished.

Hampden Road is located on the Harringay Ladder and has easy access to Green Lanes where you will find a great choice of shops, bars and cafe's.

Features

- Two Bed
- Two Bath
- Period Conversion
- Split Level
- Great Location
- Great Transport Links

Hampden Road, London, N8



Total area (approx): 58.07 sq m (625 sq. ft)