



Lancaster Road, N4

£530 Per week

A newly decorated two bedroom flat on the top floor of a Victorian converted building. The flat is bright and spacious throughout with a large reception, contemporary bathroom and separate kitchen.

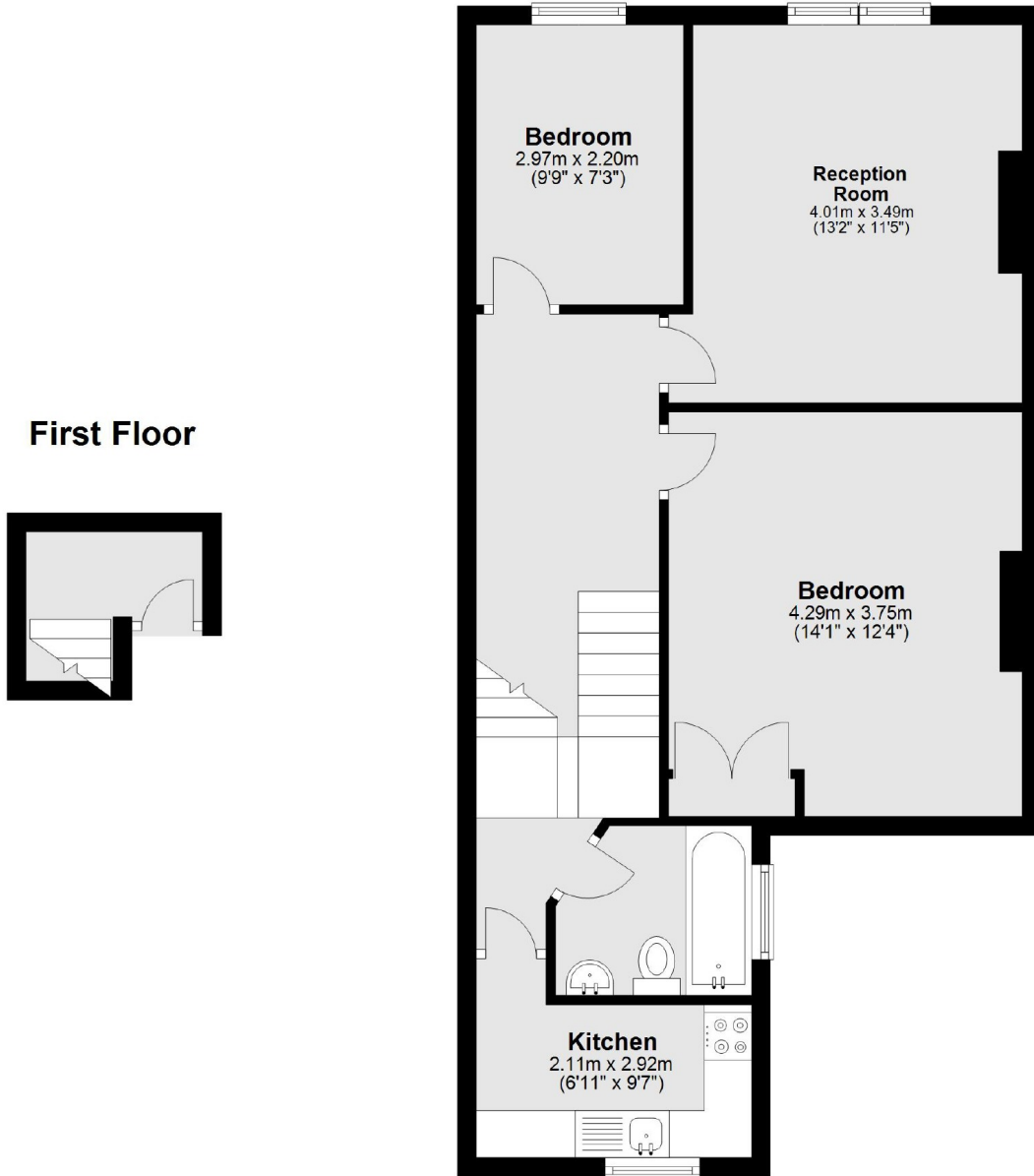
Lancaster Road is 0.7 Miles walk from Manor House station (Piccadilly Line) and 0.7 Miles walk from Finsbury Park station. Finsbury Park offers lovely walks and green spaces, and there is an abundance of restaurants and shops nearby.

Features

- Two Bedrooms
- Top Floor
- Lots Of Natural Light
- Quiet Street
- Separate Kitchen
- Great Transport Links

Lancaster Road,
London, N4

Second Floor



Total area: approx. 61.5 sq. metres (662.3 sq. feet)