



Yonge Park, N4

£600,000

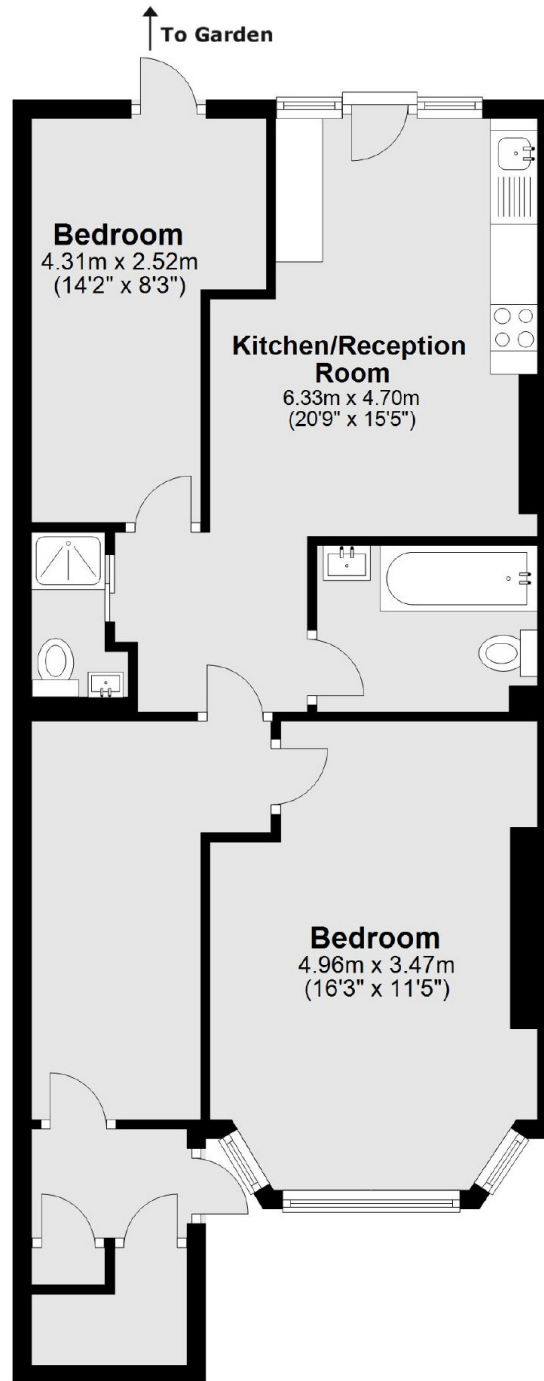
A delightful, well-presented two bedroom, two bathroom garden flat situated within an attractive Victorian Terrace. Offered to the market on a chain free basis, this property features an open-plan reception/kitchen which leads out onto a private section of the garden. It offers ample storage throughout and has had planning permission approved.

Yonge Park is perfectly located for easy access to Finsbury Park station (Piccadilly line, Victoria line, National Rail) as well as a number of bus routes connecting you to The City, West End and beyond. The green open spaces of Finsbury Park are also within close proximity as well as a great selection of amenities including supermarkets, eateries, independent coffee shops, wine bars and bakeries.

Features

Two Bedroom
Open Plan Reception/Kitchen
Share of Freehold
Front and Rear Garden
Great Transport Links
Chain Free

Yonge Park, London, N4



Total area: approx. 63.8 sq. metres (687.1 sq. feet)