



Moselle Avenue, N22

£500,000

Dexters



Moselle Avenue, N22

This well-presented, mid-terraced, two-bedroom house has lots of natural light and offers just over 560 sq ft of living space.

Upon entering, you'll be greeted by a cosy living area featuring a new and functional log burner and large double glazed sash windows with shutters. The separate, modern kitchen offers a bright and airy space, featuring a Belfast sink and a double column radiator. Straight from the kitchen is a charming south-facing garden. Both bedrooms have large sash windows with the front bedroom having fitted shutters, allowing for ample natural light. The front bedroom is finished with real engineered wood flooring and the second bedroom benefits from a newly built alcove wardrobe.

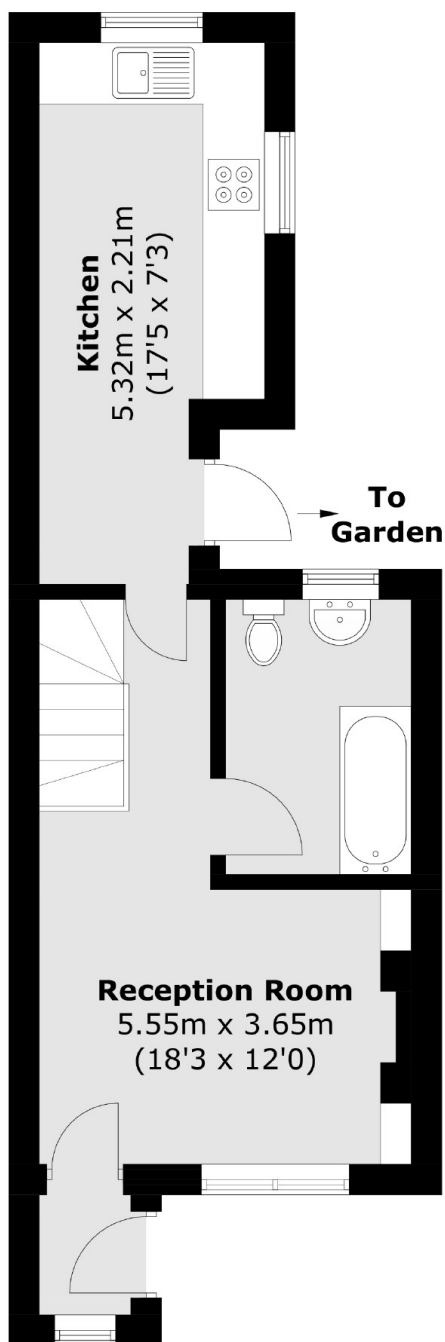
Situated in the Noel Park Conservation Area, Moselle Avenue has excellent transport links providing easy access into the City. There's an array of shops, restaurants and bars nearby and is also within walking distance of the open spaces of Lordship Recreation Ground and Alexandra Palace.

Features

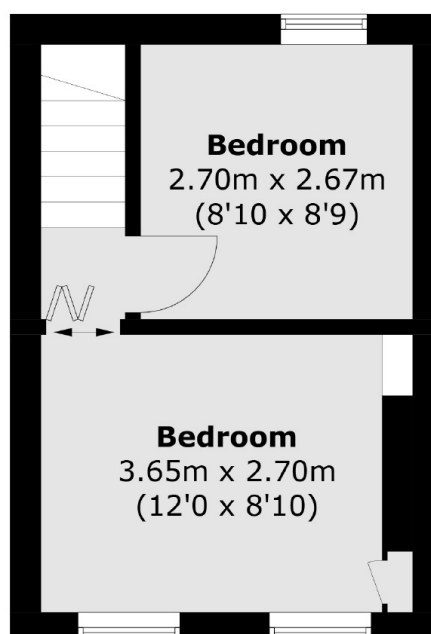
- Freehold
- Two Bedrooms
- Private Rear Garden
- Conservation Area
- Excellent Transport Links
- Period House



Moselle Avenue, London, N22



Ground Floor



First Floor

Total area (approx.): 52.9 sq. m (569.4 sq. ft)