



Upper Tollington Park, N4

£575 Per week

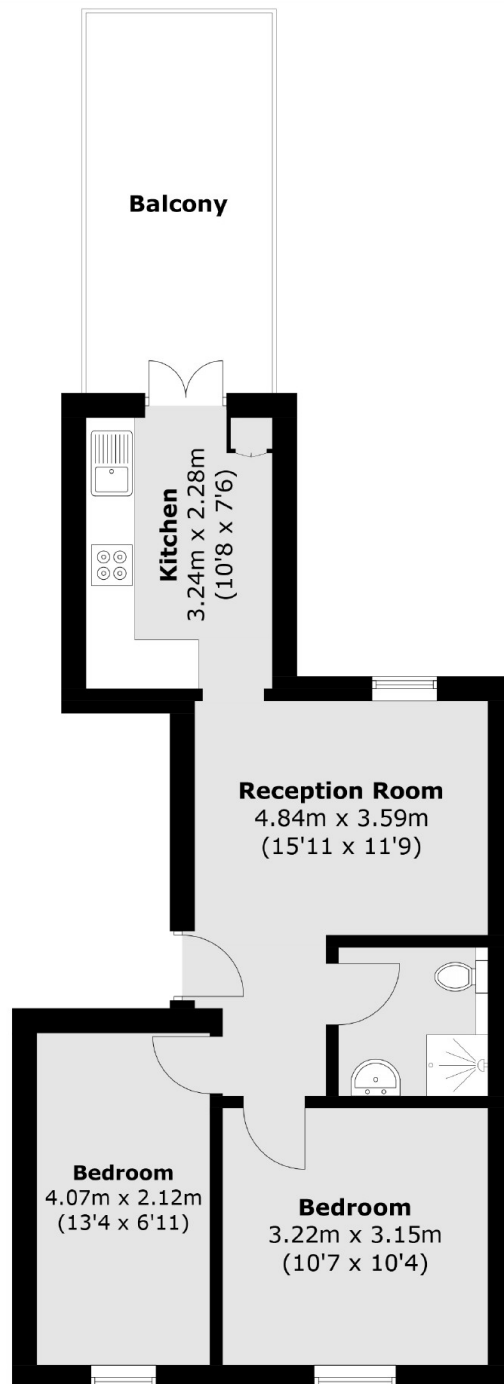
A two double bedroom property in a period conversion. This apartment has two double bedrooms, a semi open plan living area and a great private terrace.

Located on Tollington Park and within easy reach of the local shops and cafes on both Stroud Green and Hornsey Road. Finsbury Park underground station is a short distance away for access to Victoria, Piccadilly and mainline services.

Features

- Two Bedrooms
- Private Balcony
- Great Transport Links
- Period Conversion
- Modern Finish
- Great Location

Upper Tollington Park, London, N4



Total area (approx.): 45.1 sq. m (485.4 sq. ft)
Balcony area : 10.6 sq. m (114.1 sq. ft)